
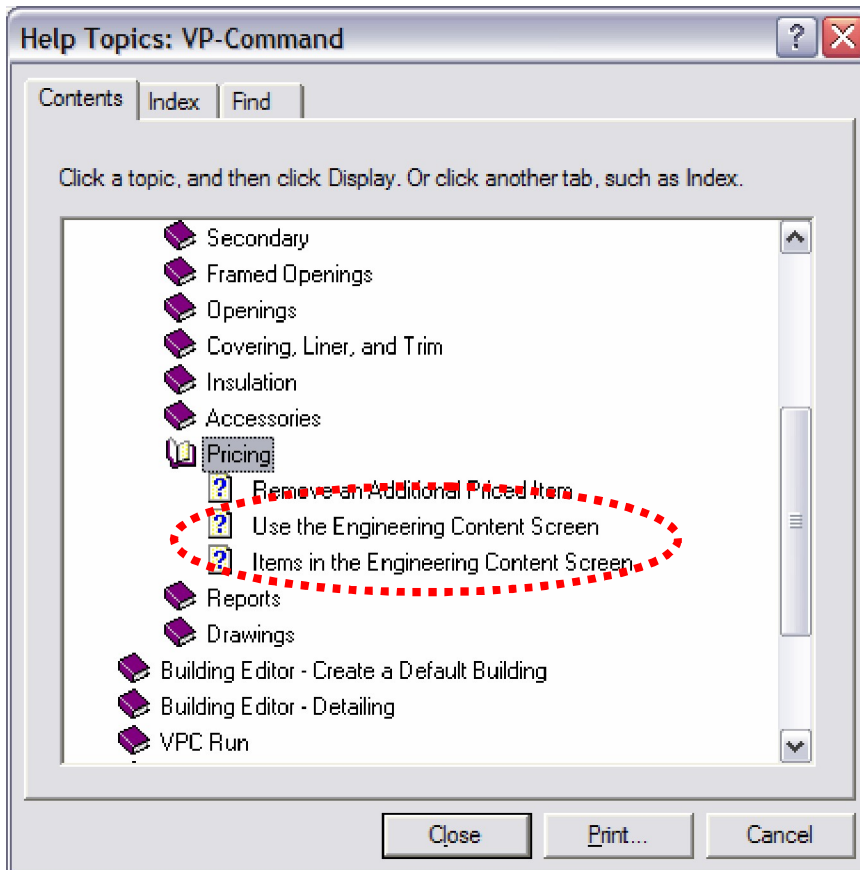


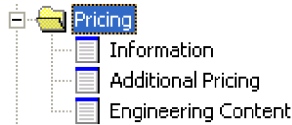
Following is a *How-to* that can be found by clicking the Help Topics button. 

It is located in the *How-To.../Building Editor – Input/Pricing* Topic:



How To Use the Engineering Content screen

Follow these steps:



- Open the pricing folder and double click the Engineering Content to review the conditions.

Engineering Content

Revised	System	User	Generate	Category	Description
	0	0	System	Special	[1=Yes, 0=No] Job site [LA Co, So Fla, Cook Co, Phoenix, Seattle,
	0	0	System	Special	[1=Yes, 0=No] Input load values exceed VPC pricing [Pricing Repor
	0	0	User	Special	[1=Yes, 0=No] Corp of Engineers Specifications
	0	0	User	Special	[1=Yes, 0=No] Export Project
	0	0	User	Special	[1=Yes, 0=No] Factory Mutual Wind / Fire Rating
	0	0	User	Special	[1=Yes, 0=No] Review / comply with Architectural Plans & Specs
Yes	0	1	User	Special	[1=Yes, 0=No] Tie to existing building [may include purlin hangers]
	0	0	System	Special	[1=Yes, 0=No] Roof or Wall Panels - Not by VP [provide by Builder]
	0	0	System	Special	[1=Yes, 0=No] Stepped Roof Expansion Joint
	0	0	System	Special	[1=Yes, 0=No] Membrane Roof System / VP Deck Frame project
	0	0	User	Special	[1=Yes, 0=No] Non-standard use of VP panels [Reverse roll, horiz.
No	4	0	System	Geometry	Qty of Hips, Valleys, and Valley Cutters
	0	0	System	Geometry	Qty of Roof Height Change conditions
No	1	0	System	Geometry	Qty of Wall-to-Roof conditions
	0	0	System	Geometry	Qty of Skewed Endwalls
	0	0	System	Geometry	Qty of Skewed Sidewalls
	0	0	System	Geometry	Qty of Octagon or Hexagon building shapes
	0	0	System	Geometry	Qty of Multiple VPC Pre-Defined Building Shapes
	0	0	System	Geometry	Qty of VPC Custom Building Shapes
	0	0	System	Geometry	Qty of VPC Shapes w/ Eave height greater than 45 feet
	0	0	System	Geometry	Qty of VPC Shapes w/ Eave height greater than 45 feet

Total Points: Lock Current Values

Revised: Show the status of the condition. If the condition was added by the system it will show No, in that the status of that item was set but has not been changed by the user. If the user has modified a system generated or user input item the status will show Yes.

System: Shows the quantity of system detected conditions.

User: Shows the quantity of user input conditions.

Generate: Shows the type of condition, either System or User. A system condition should be detected by VP Command automatically. A user condition must be entered by the user.

Category: Shows the category of input the condition is in.

Description: Shows a brief description of the condition.

All system generated quantities should be verified by the user before final pricing. Any quantities that are incorrect may be overridden by typing the correct quantity in the user quantity field. To type a quantity, simply click in the desired field and type the number.

VPC-Tip #42 – Engineering Content Screen (introduced in version 5.0)

Engineering Content

Revised	System	User	Generate	Category	Description
	0	0	System	Attachments	Qty of Interior Partitions [length or width]
	0	0	System	Attachments	Qty of Walls w/ Canopy or Roof Extension greater than 8 feet
	0	0	System	Attachments	Qty of Walls w/ Canopy or Roof Extension with Soffit
Yes	0	1	User	Attachments	Qty of Walls w/ Standard Vertical Facades or Parapets
	0	0	User	Attachments	Qty of Walls w/ Standard Mansard Facades
	0	0	User	Attachments	Qty of Walls w/ Complex Facades or Parapets
No	1	0	System	Frames	Qty of Jack Beams [Different Spans]
	0	0	System	Frames	Qty of Walls w/ Wind Beams or Lintels
	0	0	System	Frames	Qty of Support Beams to carry add'l structures [Cupolas, Dormers, etc.]
	0	0	System	Frames	Qty of Frames w/ Hot-Rolled Exterior Columns
	0	0	System	Frames	Qty of Unique Multi-Story Frames or Frames Across VPC Shapes
	0	0	System	Cranes	Qty of Crane Aisles [perpendicular to frames]
	0	0	User	Cranes	Qty of Crane Aisles [parallel to frames]
	0	0	System	Cranes	Qty of Crane Aisles with Type E or F classification cranes
	0	0	System	Cranes	Qty of Crane Aisles with Stepped Crane Columns
	0	0	System	Cranes	Qty of Crane Aisles with Auxiliary Crane Columns
	0	0	User	Cranes	Qty of Columns w/ Jib Cranes [different conditions]
No	3	0	System	Bracing	Qty of Walls and Roofs w/ Angles or Tube X-Bracing
	0	0	User	Secondary	Qty of Walls w/ Non-Std Use of Secondary [inset/outset, non-std o...]
	0	0	System	Secondary	Qty of VPC Shapes w/ Bar Joist Roof System [NOT Wide Bay Purlin...]
	0	0	System	Secondary	Qty of VPC Shapes w/ Full or Partial k... [different conditions]

Total Points: Lock Current Values

When all user changes are complete you can click the Lock Current Values check box so that the engineering content values will not change if the job is re-run. This should only be used when the pricing is finalized.

All system generated quantities should be verified by the user before final pricing. Any quantities that are incorrect may be overridden by typing the correct quantity in the user quantity field. To type a quantity simply click in the desired field and type the number.

When all user changes are complete you can click the Lock Current Values check box so that the engineering content values will not change if the job is re-run. This should only be used when the pricing is finalized.

Once all input is complete click OK and save the project.

Engineering Content Charges 4400

Engineering Content Charges

By	Qty	Points	Description	Price
System	4	12	Qty of Hips, Valleys, and Valley Gutters	1200
System	1	2	Qty of Wall-to-Roof conditions	200
System	1	10	Qty of Mezzanines	1000
System	3	9	Qty of Walls and Roofs w/ Angles or Tube X-Bracing	900
System	1	3	Qty of Jack Beams [Different Spans]	300
User	1	6	[1=Yes, 0=No] Tie to existing building [may include purlin hangers]	600
User	1	2	Qty of Walls w/ Standard Vertical Facades or Parapets	200

Each point added in the engineering content list is worth \$100 engineering fee. An itemized break down of conditions and points is shown at the end of the pricing report. There is also a new category on the pricing summary to show the net engineering fee added.