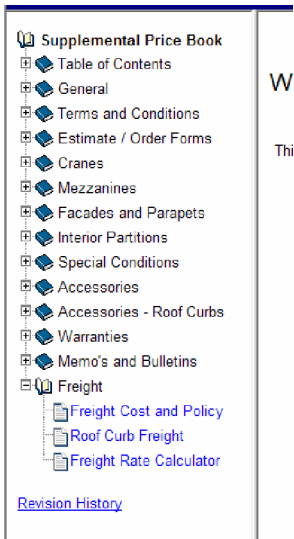
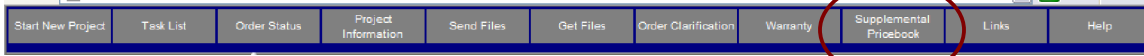


Supplemental Price Book VPC Tip #40 - How to use Freight Rate Calculator

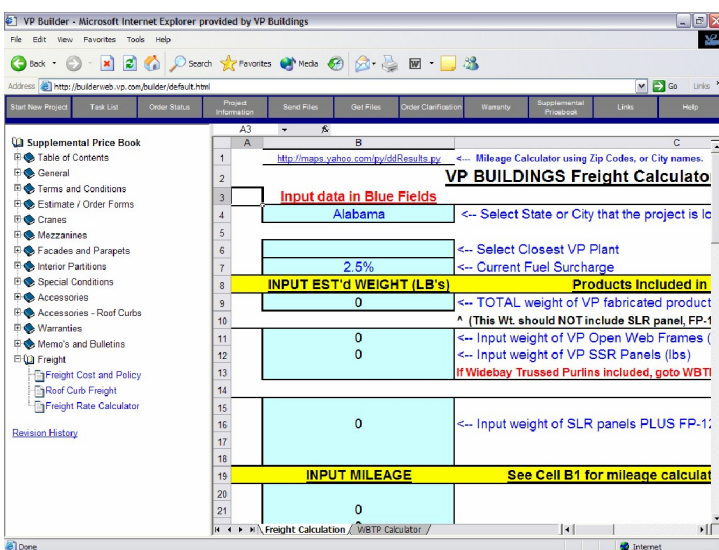
In the Supplemental Price Book, there is one document that may need some additional instruction. That is the Freight Rate Calculator. The Freight Rate Calculator is an Excel document that will calculate freight costs from the nearest plant to your job site. The required information that you will need to put in is the weight of products; VP Products, SLR, Open Web, WideBay, and so on, as well as the miles to the job site from the plant location.

You access the Builder Web site at www.vpbuildings.com, and click on the "Supplemental Pricebook".



Once there, open the freight item on the tree, and click on the Freight Rate Calculator.

This will open the Freight Rate Calculator. You will have the choice as it opens to "Save" it to you local machine or "open" it. The open option is shown below.



Supplemental Price Book VPC Tip #40 - How to use Freight Rate Calculator

Once you have the Freight Calculator open follow the following steps to calculate the Freight.

INPUT EST'd WEIGHT (LB's)		Products Included in the Project
0	TOTAL weight of VP fabricated products (lbs) ^ (This Wt. should NOT include SLR panel, FP-12 Panel, or WideBay Purlins)	
0	Input weight of VP Open Web Frames (lbs)	
0	Input weight of VP SSR Panels (lbs) If Widebay Trussed Purlins included, goto WBTP Calculator for data input.	
0	Input weight of SLR panels PLUS FP-12 panels (lbs)	
INPUT MILEAGE		See Cell B1 for mileage calculator link, or use VPBS.
0		

Instructional steps:

1. Select the State the project is located in from the dropdown list.
2. In the next field, select the Closest VP Plant location from the dropdown list.
3. The Fuel charge is set and should not be changed.
4. Enter the total weight of the VP Fabricated products in Pounds. This includes all VP products, even though we ask for Open web and SSR panels to be broken out in the fields below.
5. Enter the weight of any Open web frames in pounds.
6. Enter the weight of any SSR Roof Panels in pounds.
7. If you have Widebay Trussed Purlins on the job, click on the WBTP tab at the lower left and follow the screens for determining the freight.
8. Input the weight of SLR and FP-12 panels, if applicable.
9. Input the miles from the plant location to job site. You can use the hyperlink to go to the Internet to calculate the mileage. Make sure to click off of the mileage input screen before you print, so the worksheet will re-calculate.
10. Note the number of trucks and totals will be shown. You can also click down at the bottom to see the notes that may have be generated from the system.
11. Print the document, and enter the amount in VPCCommand under the Pricing Information.

Supplemental Price Book VPC Tip #40 - How to use Freight Rate Calculator

Widebay Truss Purlin Freight Calculator:

The screenshot shows a web browser window displaying a spreadsheet titled "WBTP Calculator". The spreadsheet is organized into columns A through G and rows 1 through 26. The main content area contains a table with the following structure:

WBTP Depth (Inches)	Number of Trussed Purlins <= 52.5' long	Number of Trussed Purlins greater than 52.5' long
18	0	0
20	0	0
22	0	0
24	0	0
26	0	0
28	0	0
30	0	0
32	0	0
34	0	0
36	0	0
38	0	0
40	0	0
Totals	0	0

Below the table, there are summary boxes:

- Number of bridging pieces (WBB1's) -> 0
- Total Number of Trucks Required = 0
- Number of Regular Trucks Required = 0
- Number of Overlength Trucks Required = 0

The browser's address bar shows "http://www.supplementalpricebook/spb.htm" and the title bar shows "Supplemental Price Book - Microsoft Internet Explorer provided by VP Buildings".

Instructional Steps:

1. From VPCommand output & drawings, input number of Widebay Truss Purlins (WBTPs) by depth and by length as indicated in table below.
2. From VPCommand output & drawings, input number of bridging pieces (WBB1's) as indicated in table below.
3. Determine the mileage from Laredo TX to the project jobsite. Enter mileage where indicated on Freight Calculation tab (located in separate line once you enter data on the WBTP Calculator tab).
4. Make sure to click off of the mileage cell so that the worksheet will recalculate.
5. Print out copy once the rest of the Freight Calculation page is done.

If you have any questions, please contact Software via [email](#), or by phone, 1-877-874-3579.