

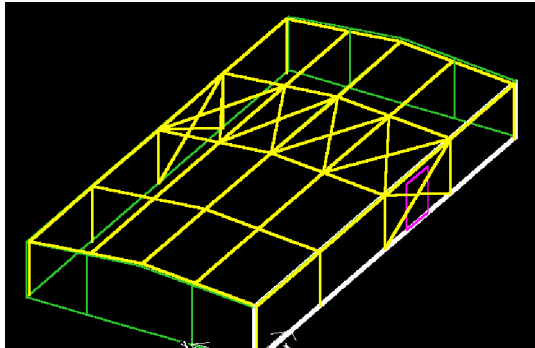


VPC-TIP 32

May 15, 2003

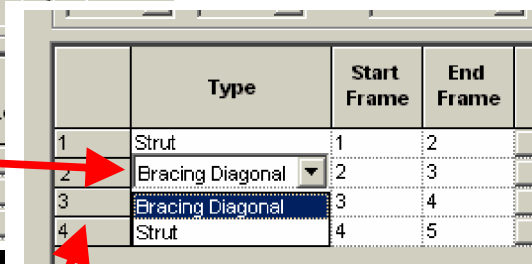
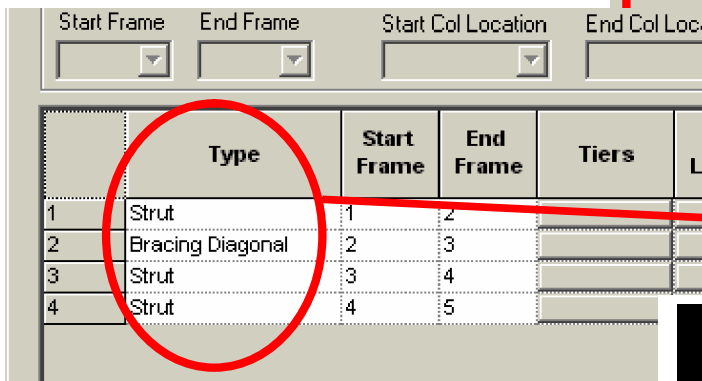
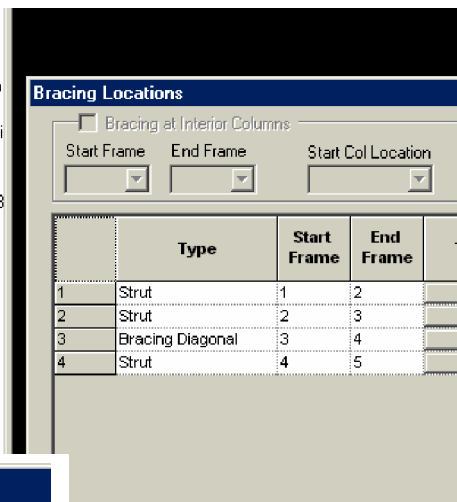
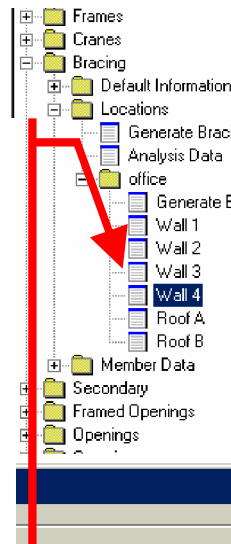
Moving Bracing

The procedure to **relocate Bracing** was changed in version 4.0. The below procedure will assist in doing this. As with any new VPCCommand release, don't forget to look at the "Read-Me" file for the latest features.



- Default Bracing Location for this building showing interference with door

- To relocate the bracing to an adjacent bay:
- Go to: **Bracing / Locations / Shape name / Wall** (on which to move bracing)
- Note the Bay locations shown **before** revising.
 - Bay 1 = **Strut** (frame 1-2)
 - Bay 2 = **Strut** (frame 2-3)
 - Bay 3 = **Bracing Diagonal** (frame 3-4)
 - Bay 4 = **Strut** (frame 4-5)
- Remember that frames are numbered left to right as you view the wall from the outside. Thus the frame numbers would be reversed on the back wall for this shape.



- Click in the "Type" field and a drop down list will appear with the available selections.
- Change the "Strut" to "**Bracing Diagonal**" where you wish the bracing to be and change to field that will not have diagonal bracing to "Strut."
- Click on **OK** to accept your input.

