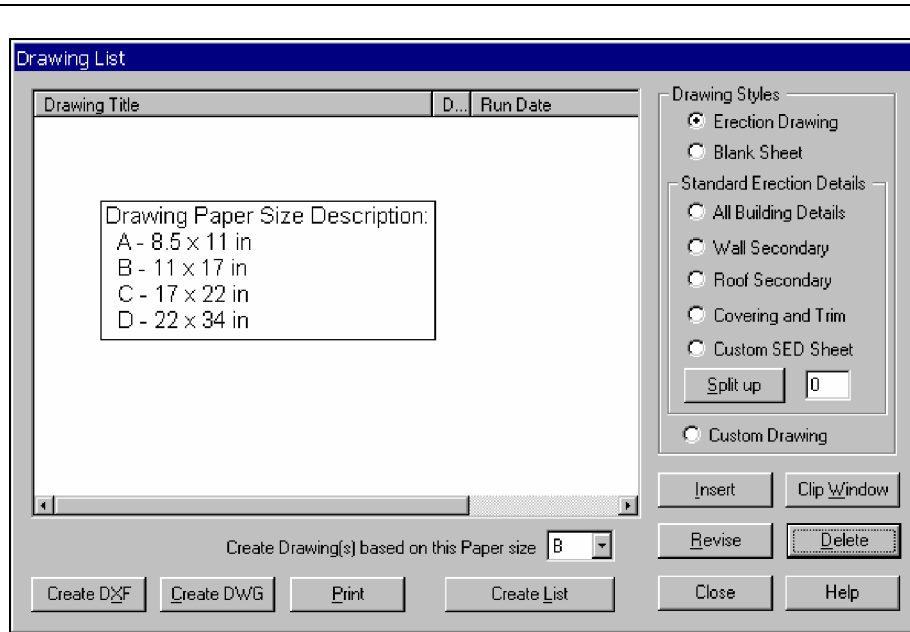


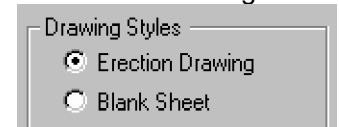
## VPC-Tip #26 - Combining VPC Drawings

This How-to describes the VP Command feature of combining drawings that share a common plane. The following steps refer to generating a drawing for a Rigid Frame combined with Lean-to.

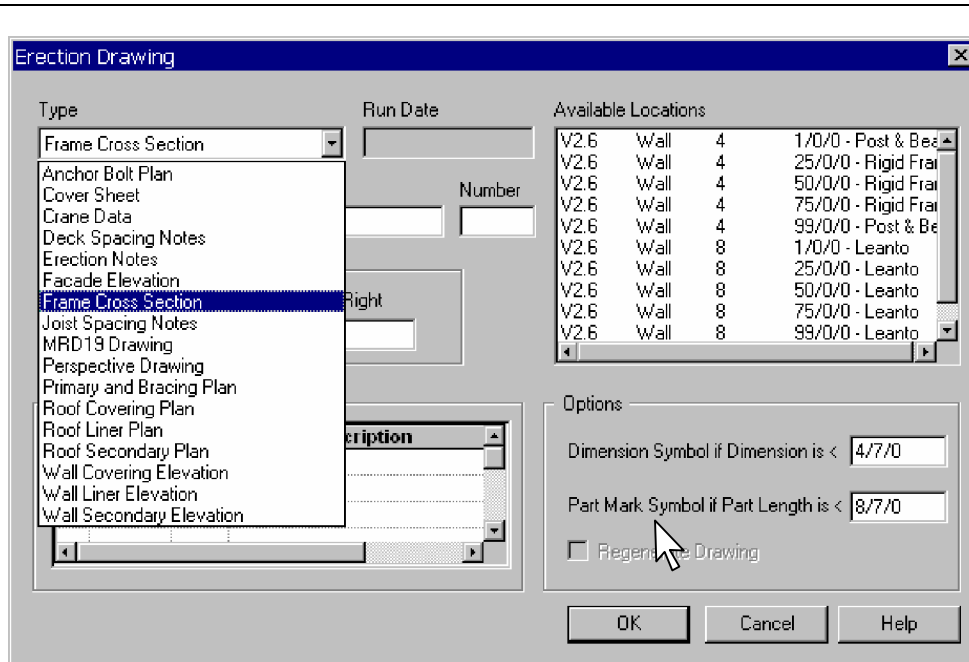
Other instances where this VP Command feature could be used are for Frames Across Shapes, multiple Portal Frames on a Sidewall, Wall Secondary, Covering, and Liner sharing the same plane.



1. Go to VPC Plot and open your VP Command file.
2. The Drawing List dialog box will appear on the screen as shown.
3. Select the Drawing Size prior to generating any drawings.
4. Select the Drawing Styles as Erection Drawing.



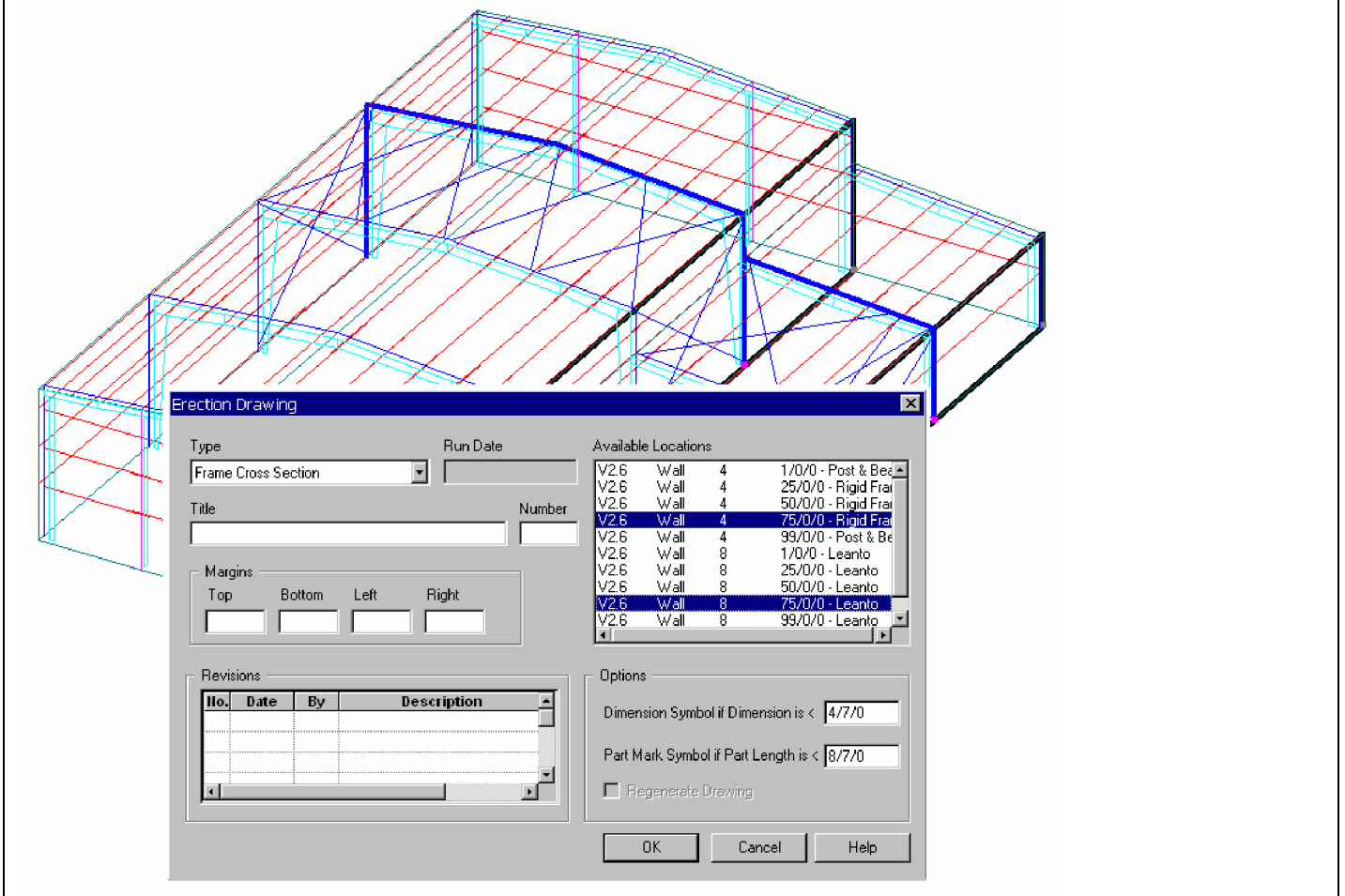
5. Move Drawing List window as far left and down but still have the Insert Button in view. Select the Insert Button.



6. Select the Type of Erection Drawing you want to generate.
7. Select from the Available Locations the first plane of the drawing you want to generate.
8. Hold down the Ctrl key and select the next plane(s) of the drawing you want to generate.
9. Once you have selected the locations you want generated, select **OK**.

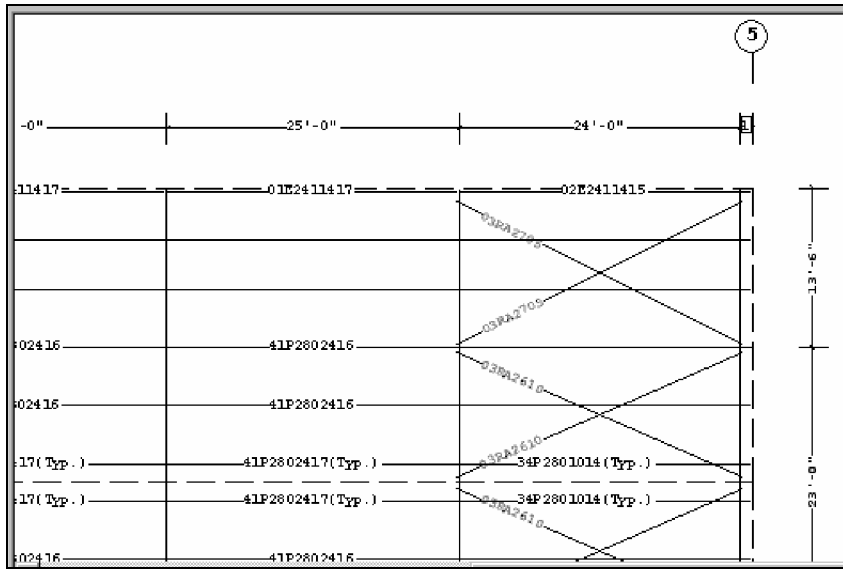
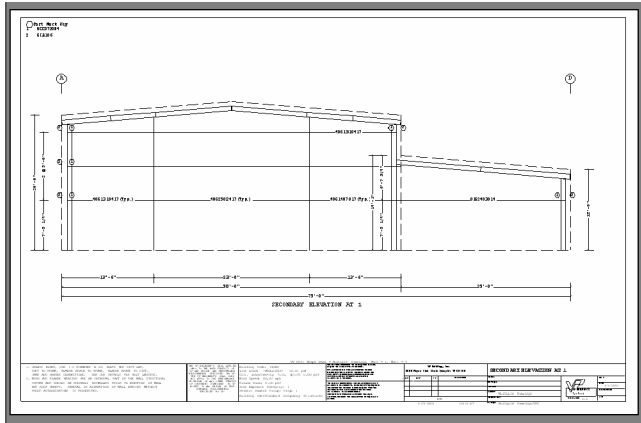
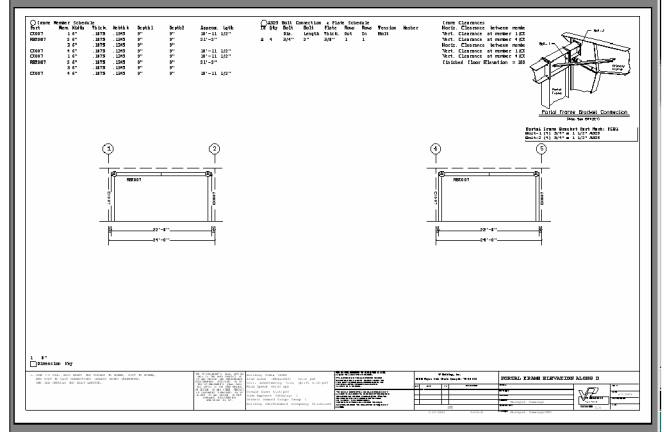
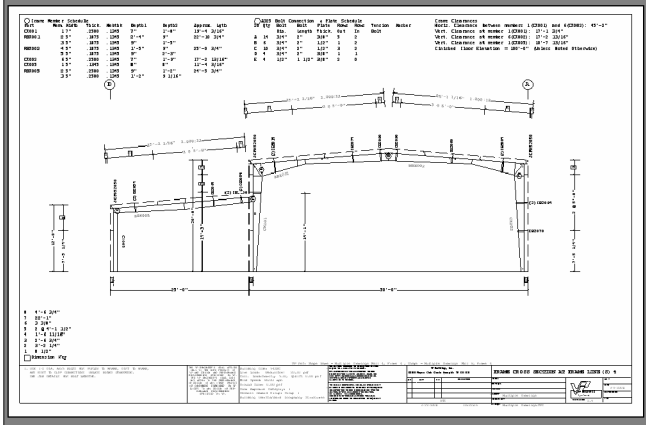
## VPC-Tip #26 - Combining VPC Drawings

Note: When you select an Available Location, the Drawing in the background will highlight the selected plane(s).

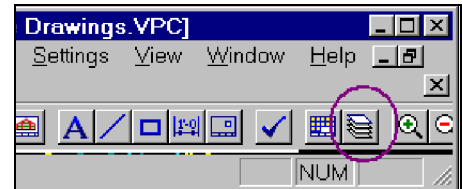


## VPC-Tip #26 - Combining VPC Drawings

See graphics below for resulting drawings from various selections:



10. Information within a Surface may be combined with use of **Layers**. Select the Layer Icon and **Click On/Off** the required layers. See sample of Roof Secondary combined with Rods.



Line - Rod Bracing w marks	<input checked="" type="checkbox"/>	Solid
Line - Rod Bracing w-o marks	<input type="checkbox"/>	Dot
Line - Bracing Forces	<input type="checkbox"/>	Solid
Line - Bracing Secondary For	<input type="checkbox"/>	Dot
Line - Purlins w marks	<input type="checkbox"/>	Solid
Line - Purlin w typ marks	<input checked="" type="checkbox"/>	Solid

### WARNING(S):

- Combining drawings on common surfaces (planes) can be done providing the Available Locations list shown in Steps 6 through 9 includes the surfaces in question.
- When plotting Frame Cross-sections with Frames Across Shapes, the system generates frames per shapes. (Segmented). Full-length cross-sections can be accomplished by selecting that frame within all shapes that frame passes through.