

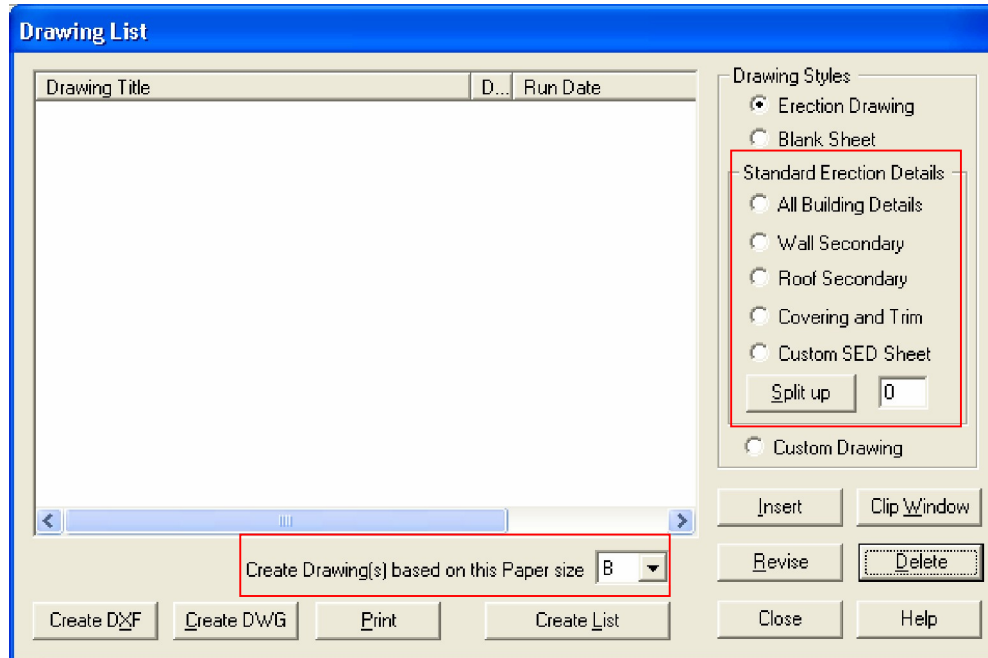


# VPC-TIP

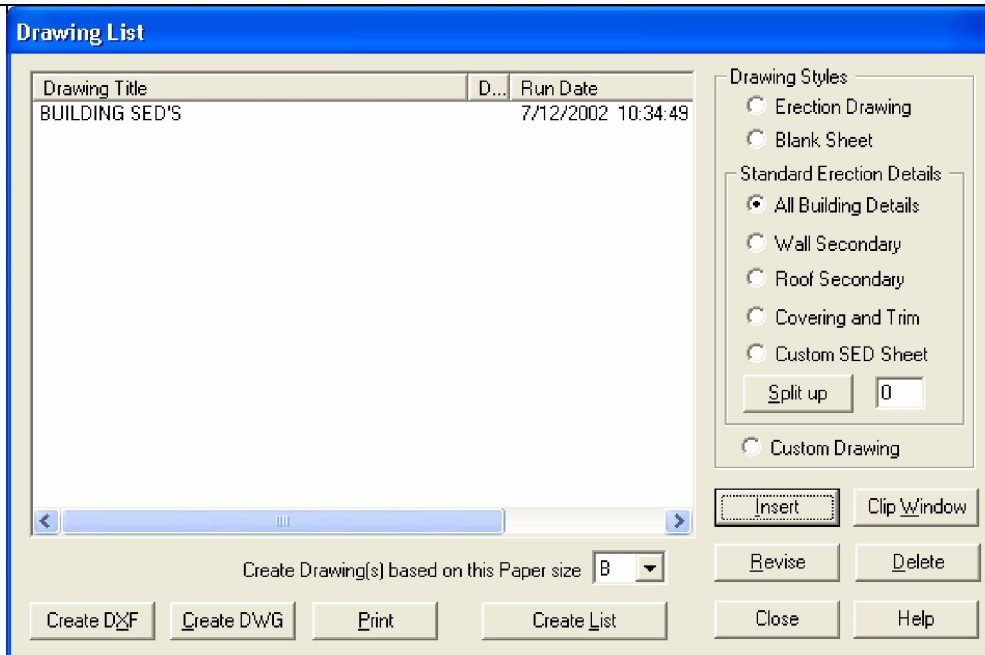
August 2, 2002

## Creating Standard Erection Details (SEDs)

This procedure will help you to Create Standard Erection Details (SEDs) for your project. Printing these will help to insure that you have input what you need. For example, if you require Eave Gutter on your building, but do not see the detail for this, you have not input this trim condition. These are also an excellent resource to show your customer, Architect, etc.



1. **Open** your VP-Command file.
2. When the job opens up, the Drawing List dialog box will appear on the screen.
3. Select the **Drawing Size** prior to generating any SED's.
4. Inside the Drawing List dialog box, look at the Standard Erection Details choices on the right side.
5. Select the Radio Button for the type of details you want on the drawing you are about to create
6. Click on the Insert button.



7. A drawing will now appear in the Drawing List dialog box.
8. Select this drawing.
9. Move or close the drawing list dialog box out of your way.
10. Displayed is the entire set of generated details. Click the print preview button to make sure the details are legible.
11. See the How to split up SED's to make changes to the number of SED's displayed per page.