

Description of VPCCommand Colors

Frames: Red Frames indicates that the frame designed and detailed completely.

Frames: Yellow indicates that the frame has not been designed or Interactive Design is required. This member has not priced.

Secondary: Cyan (Light Blue) Secondary indicates the secondary has designed and detailed.

Secondary: White Secondary indicates that the secondary has not been designed or that design has failed for that member. This member has not priced.

Bracing: Yellow Bracing indicates that the bracing member has been designed and detailed.

Bracing: White Bracing indicates that the bracing member has not been designed or that design has failed for that member. This member has not priced.

Trim: Salmon (Pink) Trim indicates that a trim segment has generated. You must verify on the Reports if there are any unpriced trim items.

Trim: Red-Dashed Lines indicate that the trim segment has not been generated.

Other Color Designations:

Building Lines: Lime Green-Dashed

Sag Angles: Lime Green

X-Y Axis: White

Wall Panel Members: Magenta (Pinkish)

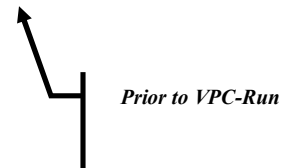
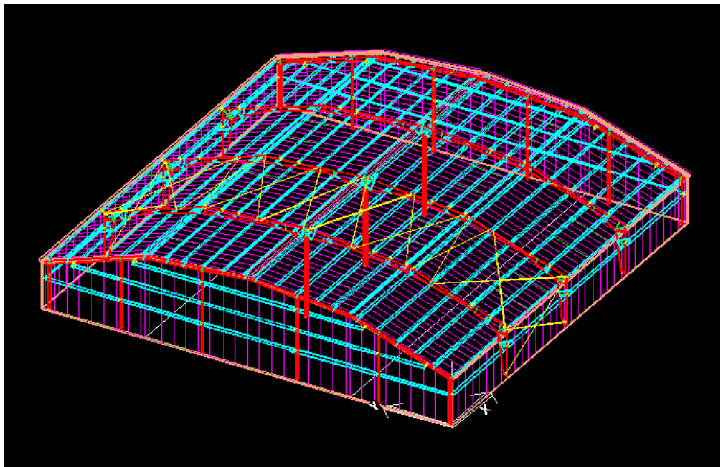
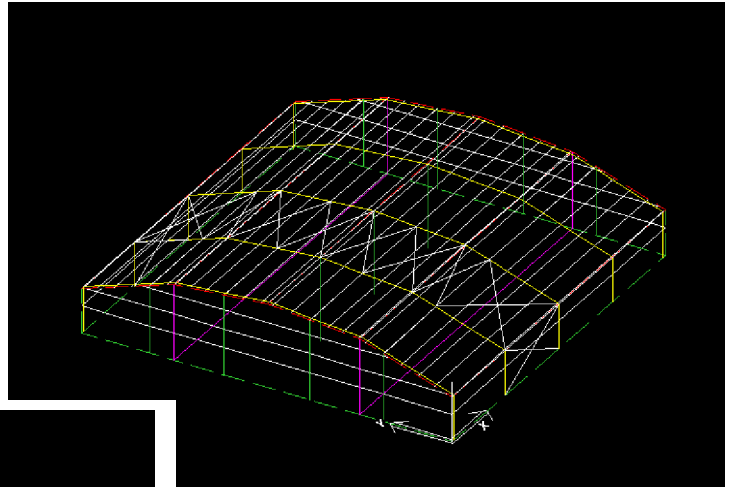
Roof Panel Members: Magenta (Pinkish)

Frame Holes: White

Frame Clips: Yellow

Frame Stiffeners: Lime Green

Flange Braces: Cyan (Light Blue)



Prior to VPC-Run



After VPC-Run