



# VPC-TIP

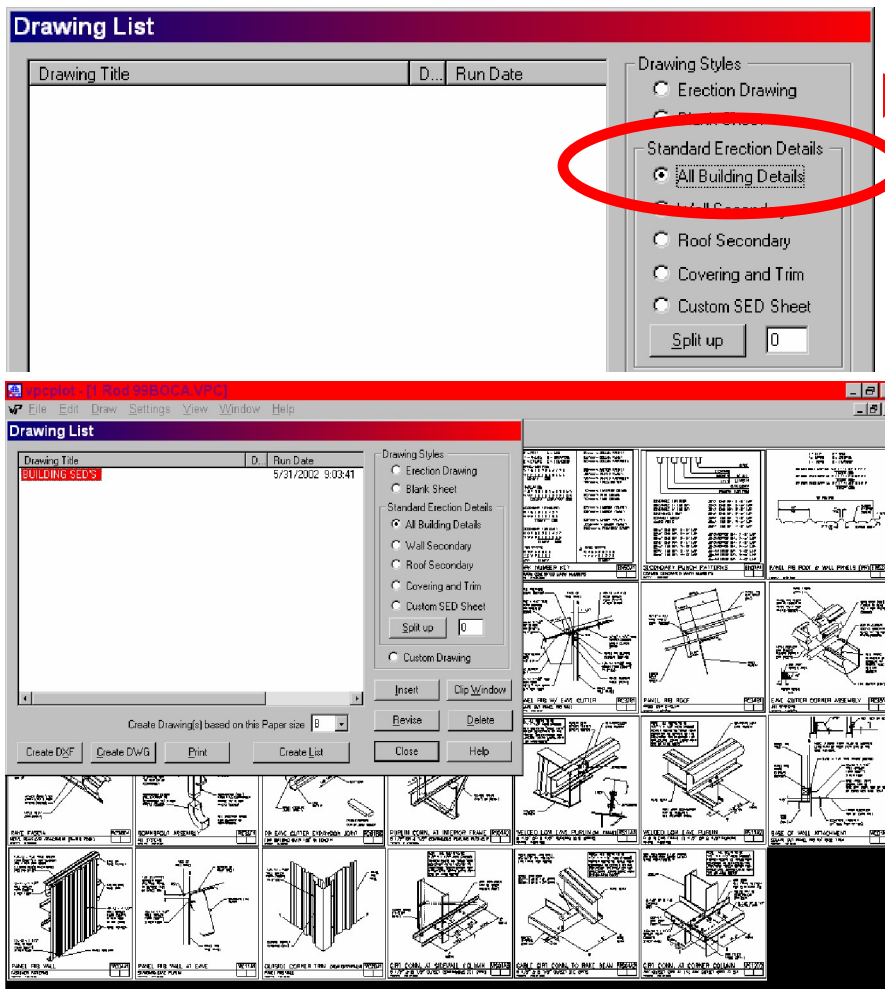
May 31, 2002

## Reviewing Drawings and Details

### Reviewing Drawings and Details

In your never-ending quest to make certain that you receive the parts and pieces you believe you are inputting into VPCCommand, following are some recommendations. This is the *minimum* items I complete on any VPC file I input.

1. Thoroughly review *Input Report*.
2. Complete and Save *VPC-Run* function
3. Visually Review the resulting “*Colors*” in the Graphics Pane in the Building Editor. See *VPC-Tip #2* for more information on this.
4. Run and Review *Pricing* and *Edit Check* Reports. Look for the asterisks (\*), and address as necessary.
5. When I feel I am getting what I need, I generate some *Drawings* and the *Standard Erection Details (SEDs)* to review (you can view these on screen or print out if you desire). If my SEDs show Panel Rib roof details, and I thought I input SSR, chances are that my Input is not correct. A common mistake is to have SSR on the main roof, and then I input a canopy and forgot to set this up in my Default accordingly or forgot to change it during input. *Shown below is the method to generate “All Building Details” that apply to your VPC file according to your input.*



- Click on the “*All Building Details*” button and click on “*Insert*” to create the details.
- The *SEDs* will display for your review. You can view these on screen or print them out if desired.