



VPC-TIP

November 16, 2001
4-Bolt Anchor Bolt

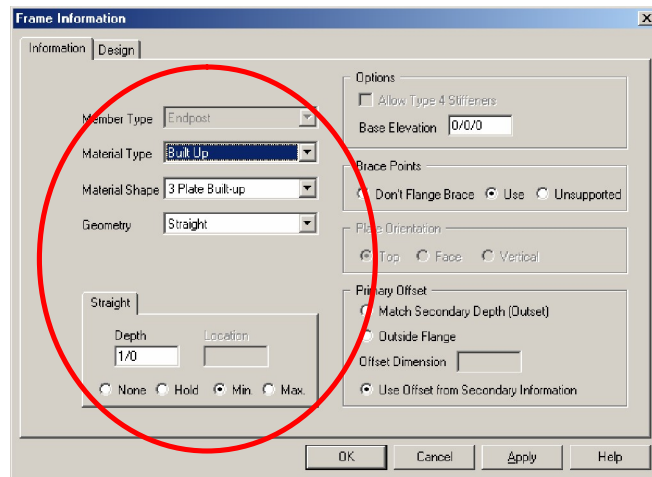
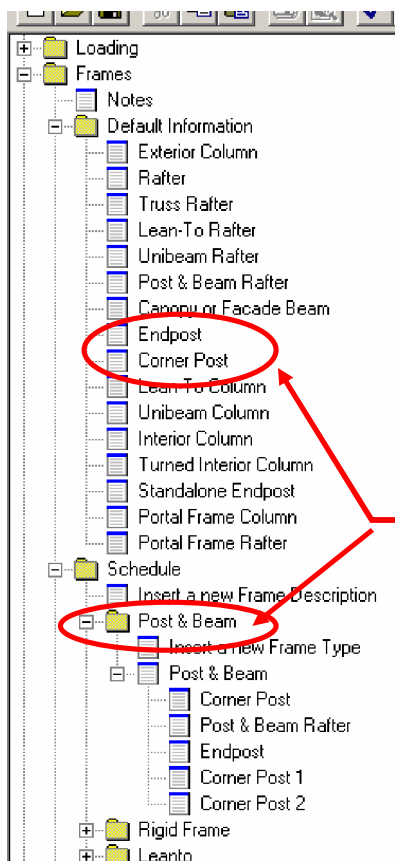
OSHA requirement for a minimum of 4 anchor bolts

I have heard things come in 3's. So it is true with the following issue. Three times this week I have been asked "why am I receiving only two anchor bolts at my post and beam endwall?" The below is directly from the "Read-Me" file for the latest version, 3.0a, of VPCCommand.

Four bolt anchor bolt patterns

4 bolt anchor bolt patterns are now the standard for VP Command. All *3-plate exterior columns* will default to a 12" base, resulting in a 4-bolt pattern with a 5" gage & pitch. *Gage columns* will remain a 2-bolt pattern. Soldier columns & portal frames will still use a 2-bolt pattern, when their depth permits.

This means that in many cases your Post and Beam will be Gage material and therefore will have only a 2-Bolt Anchor Bolt pattern. If you MUST have 4 bolts at the Post and Beam, you can force the Corner Columns and Endposts to be Plate with a minimum depth of 12". This can be done as shown below:



- From the Tree, you can modify the Frame Information for the desired members at the "Default Information" level, or from the "Frames / Schedule".
- Remember that you should ALWAYS make changes at the highest level in the Tree. Making the changes at the Default Information level would insure that frame types such as Post and Beam Lean-to's would also reflect the changes. Changing the Frame Information in the Schedule would only apply the changes to the selected frame type.