



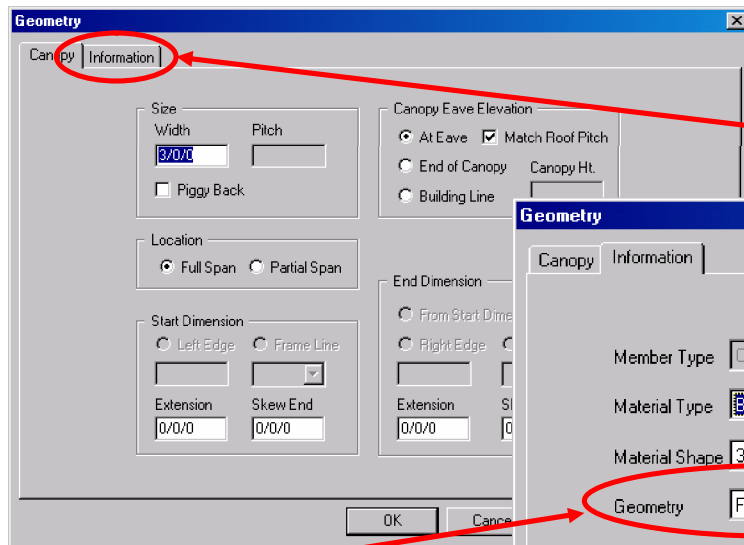
VPC-TIP

October 31, 2001

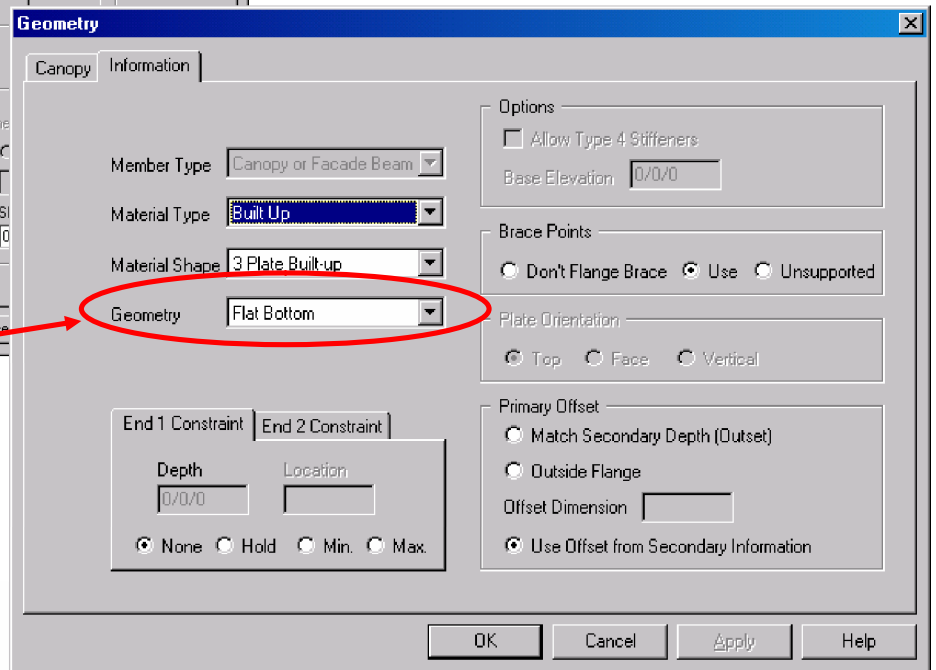
Flat Bottom Canopy Beams

Chad Beery of the North Carolina Service Center generously donated this week's tip. It concerns the "Flat Bottom" designation of Canopy Beam Framing members.

Many times a flat bottom canopy beam is desirable for overhangs where you will install soffit panel. The standard VPC generated canopy beam is straight but you have the option to change it to Flat Bottom if necessary. If you remember from your Level 1 VPCCommand training we told you how to control frame properties by modifying the frame types in the Frames / Schedule. For this case you can control the properties from the canopy input screen itself.



Go to the **Attachments** folder and double click the wall the canopy is located on and input your information as you normally would. To hold a Flat Bottom canopy beam you can use the **Information** tab located on this screen.



In the **Geometry** drop down list you can choose Flat Bottom for your canopy beams. You could hold a depth at end 1 and end 2 if you need it. The output from VPC should be similar to the picture below.

