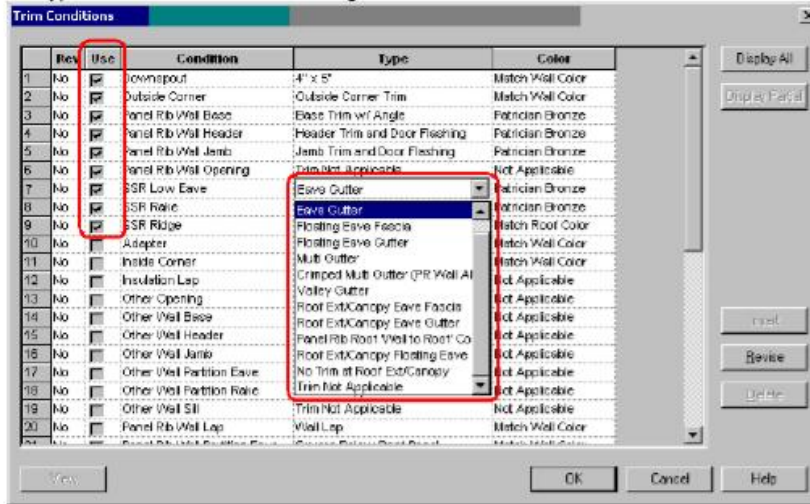


VPCCommand version 5.5 Trim and Covering Enhancements

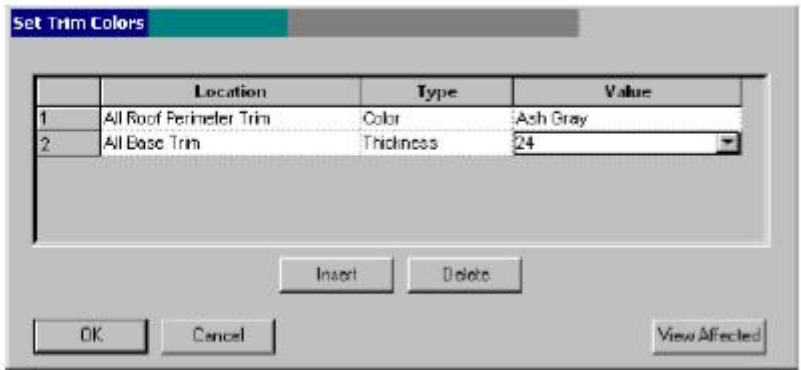
Trim - Conditions

- The trim conditions that are actually used on the building will be grouped at the top of the grid and marked as used.
- Trim type can now be revised on the grid.

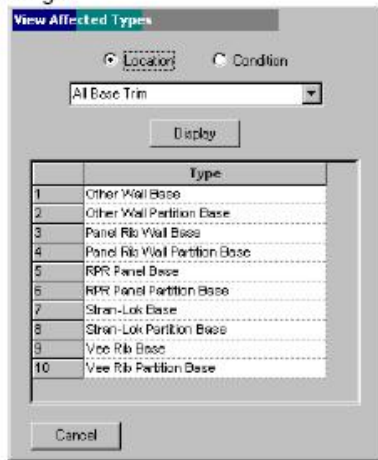


Trim - New Color/Thickness revision screen

- Allows changes to the color and/or thickness of trim for a group of trim conditions.
- The color revision will be made to individual parts when a part or summary part report is run and when build is run.
- It will revise any part that has a manufacturing type code starting with "T" and any part in the kit that has its color set to "Match Kit Color".
- The thickness revision will be made to any part that has a manufacturing type code starting with a "T".
- If the part has a default thickness that is thicker than the revision, the part will not be updated.
- Excluding Roof Ht Change, Wall to Roof, and AEP Colors.
- **Warning - These changes will not be shown on any of the Trim Conditions screens.**

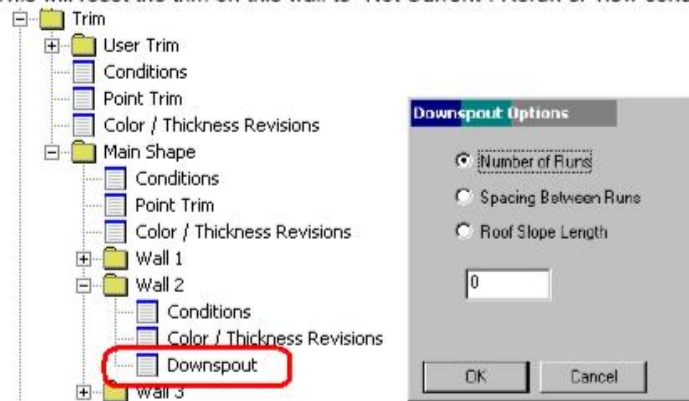


- View Affected screen specifies the trim conditions that will be affected by the "Set Trim Color / Gage" change.



**Trim - New Downspout revision screen**

- Controls the total number of downspout runs, the spacing between runs, or the total length of roof slope that is draining to the gutter.
- This will reset the trim on this wall to "Not Current". Rerun or view conditions to redetail the wall.



**Covering - Data**

- Input covering definitions on all walls. Allows fast input of partial height masonry on all walls.

