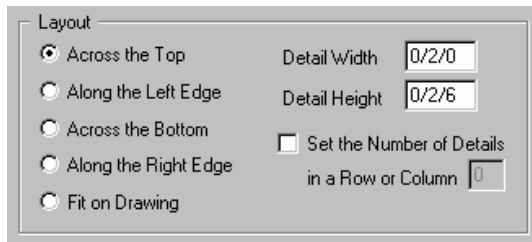
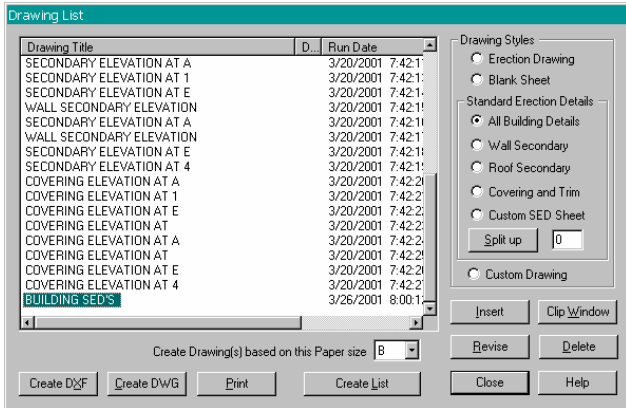


VPC Plot - How To Set the Size of SEDs



1. Open your VP-Command file in the VPC Drawing function (not the Building Editor).
2. When the job opens up, the Drawing List dialog box will appear on the screen.
3. Select **All Building Details** at the Standard Erection Details section and click **Insert**.
4. Select the **Building SED's** page in the Drawing Title dialog.
5. Select the **Revise** Button.

6. First, in the layout box, select the **Across the Top** radio button to activate the Detail Width and Height fields.
7. Highlight the Detail Width field and type the size (Feet/Inches/Sixteenths) you want (based upon the chart below). Repeat this in the Detail Height field. The details are based off these dimensions unless you are using the Fit on Drawing Layout.
8. Click **OK** to save changes.
9. Do a **Print Preview** before printing to ensure the Details are correct.

VPC Plot - Recommended SED Size and Quantity based on Drawing Size

Paper Size	'B' 11" x 17"	'B' 11" x 17"	'C' 17" x 22"	'C' 17" x 22"	'D' 22" x 34"	'D' 22" x 34"
Number of Details per Page	8	15	12	15	15	18
Number of Details (last one blank) for Engineer Stamp	7	14	11	14	14	17
Detail Width	0/4/1	0/3/4	0/5/5	0/4/4	0/6/9	0/5/7
Detail Height	0/4/9	0/3/1	0/4/12	0/4/12	0/6/2	0/6/2
Number of Details in Row	4	5	4	5	5	6
Number of Details in Column	2	3	3	3	3	3