

The Focus of this Lesson is:

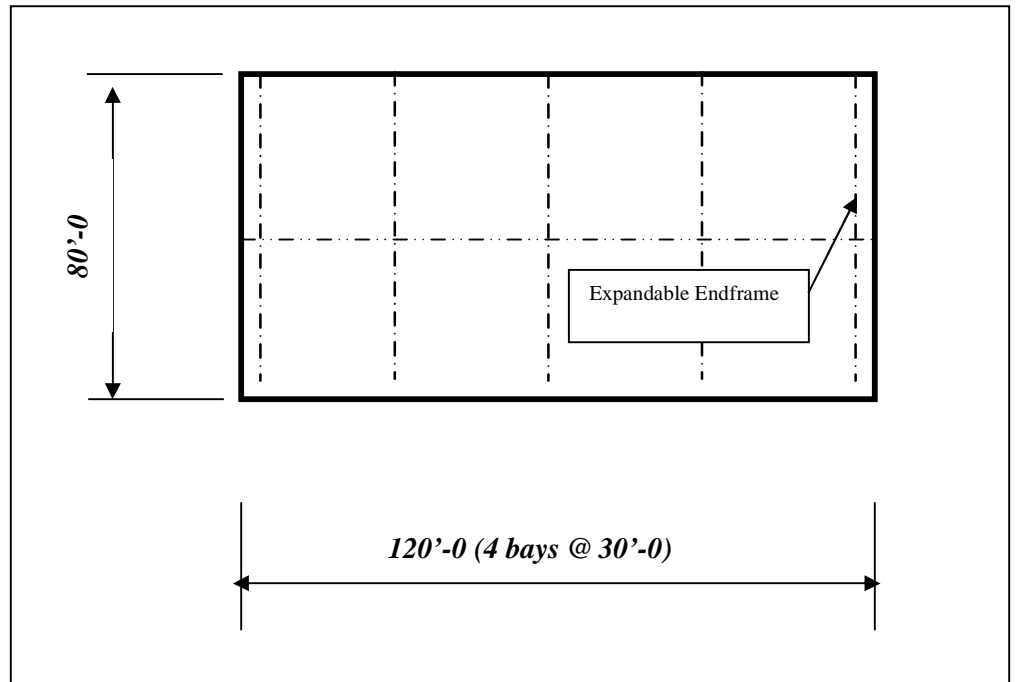
- Discuss Defaults Projects
- Input a Basic Building Shape
- Modify Loading to add Collateral Load
- Change Frame Types
- Modify Secondary for Inset Girt Condition
- Full Load Frame for Expandable Endwall
- Reports and Drawings Discussion

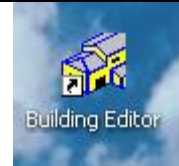

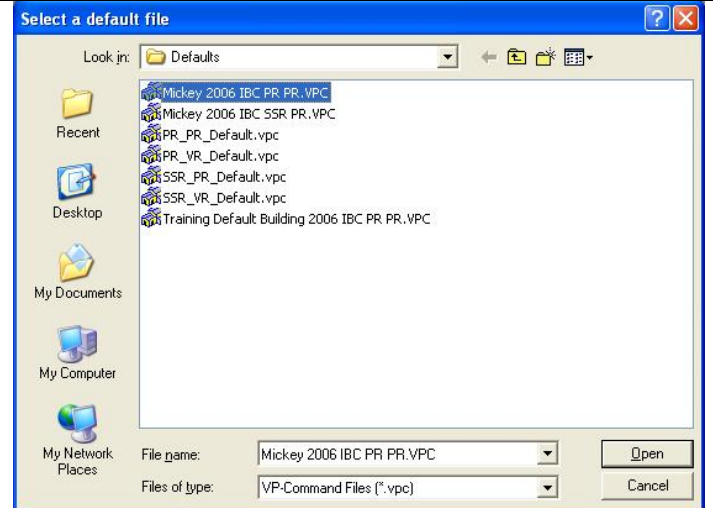
Lesson Comments:

In this lesson you will create a Building Shape using the given parameters in the "Building Description" box. We will also discuss Default projects. Selecting the proper default project can be, perhaps, the biggest time saver as far as inputting your project. Basic Loading concepts will also be covered as well as modifying frame types and girts.

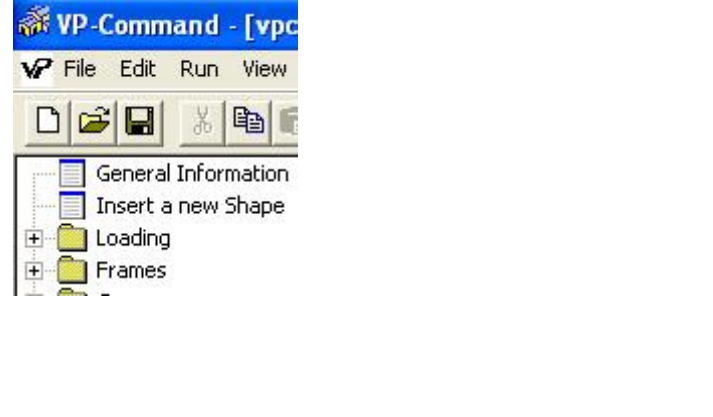
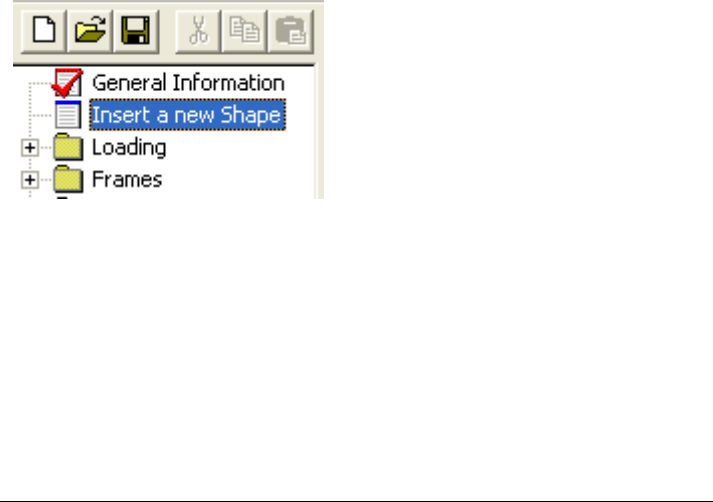
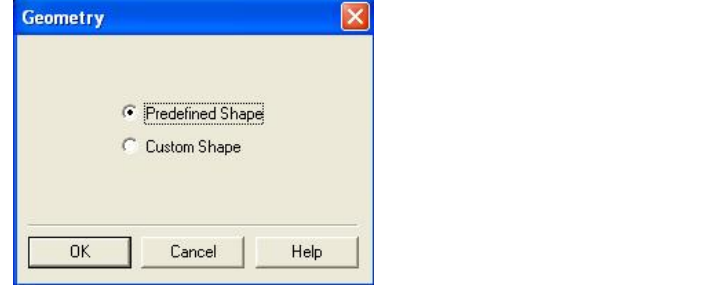
Building Description:

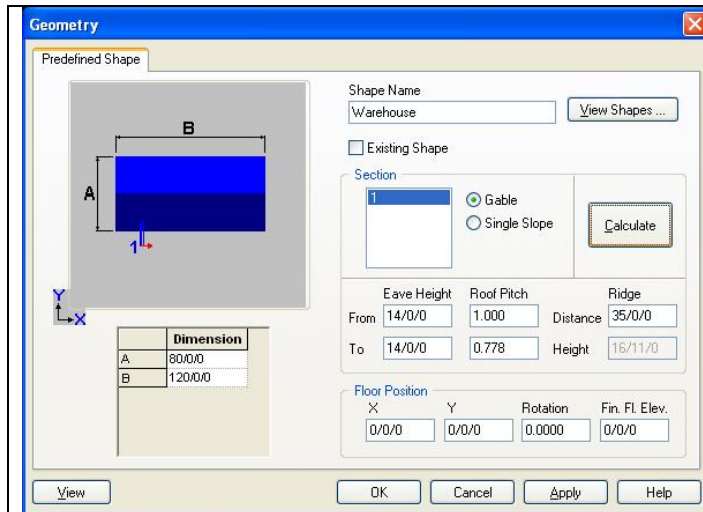
- Width = 80'-0"
- Length = 120'-0"
- Eave Height = 14'-0"
- Offset Ridge (35'-0" from Back wall)
- 4 bays @ 30'-0"
- 1:12 roof pitch at Back Roof Surface
- Mixed interior frames
- Post & Beam Endframe with standard endpost spacing at left
- Expandable Endwall at right
- Inset Girt Condition



	<p>1. Start Building Editor:</p> <ul style="list-style-type: none"> Click Building Editor Icon on your desk.
	<p>2. Start a New File: This will begin the process of creating a brand new VPCommand file (or project).</p> <ul style="list-style-type: none"> Click once on the New File icon from the toolbar (or click on File / New from the menu)
	<p>3. From the <i>Select a default file</i> window:</p> <ul style="list-style-type: none"> For this lesson, you will be selecting one of the defaults you created in Lesson 2. I chose my 2006 IBC <i>Panel Rib roof and Panel Rib wall</i> default from this list, simply Click "Open".
<p>Note: From the <i>Default Folder</i>, select a Project that most closely approximates your desired conditions. Information that can be defaulted is among others, Schedules, Loading, Covering conditions, Trim conditions, Insulation conditions, etc. Information that CANNOT be defaulted is "dimensional and geometrical". For example, you cannot default a framed opening located at 5'-0 off of a frame line. The framed opening itself can be defaulted into the schedule, but its location cannot.</p> <p>VP has also created some generic default projects for your use. You will need to create defaults specific for your needs for the Loading conditions for your area, your trim, covering, and insulation preferences, etc. A "Default Project" is nothing more than a Project that has been created. You may use any project that exists on your hard drive. A "Default Folder" has been created that will appear every time you start a new project file. It is best to give the projects in this folder, file names that you can relate to such as; "SSR, PR, EG, 4 ins, 3 ins" to represent SSR roof, Panel Rib walls, eave gutter trim, 4" and 3" insulation in the roof and walls respectively. Default filenames similar to this better explain what parameters your default project contains than does a name such as "Default 1".</p>	

Lesson 3

	<p>4. General Information:</p> <ul style="list-style-type: none"> • Double-click the General Information file. <i>Revise the General information Screen as Necessary.</i> Information you have input in your default project will carry over to this new building file; however, you must verify information and revise as necessary for your actual needs.
	<p>5. Insert a new Shape:</p> <ul style="list-style-type: none"> • Double-click Insert a new Shape to access the Geometry window. • Note: A "Shape" is defined as freestanding structure. You can have one shape or numerous shapes as part of your entire project. It is helpful to name the shape(s) something you can relate to. In other words, "<i>office, warehouse, manufacturing, etc.</i>" will be easier to work with than "<i>building 1, building 2, shape 1, shape 2, etc.</i>"
	<p>The Predefined Shape button will already be selected. (You will study Custom Shape in Lesson 8.)</p> <ul style="list-style-type: none"> • Click on OK. <p>Note: Predefined Shape will allow you to input the building envelope by selecting from over one hundred various geometrical shapes. You will select a footprint to suit your needs.</p>

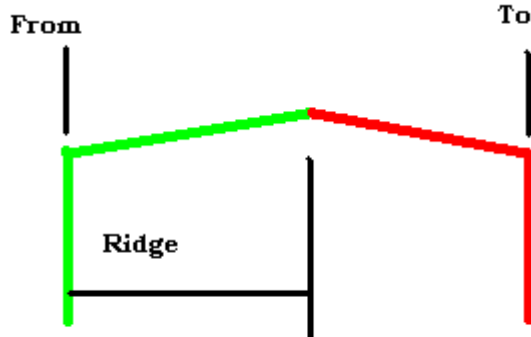


Defining Geometry:

- Input a Shape Name (use Office for this lesson). This name is used to identify this Shape throughout VPCCommand. Example names may be Office, Warehouse, Manufacturing, or any name you wish to use to identify your building shape. When working with *multiple shapes*, the shape name will allow you to quickly identify which building you are working on in the "Tree"

Defining Section Dimensions:

This predefined shape shows one section cut (1) with a "Red" arrow which represents the "To" dimensions. The opposite wall represents the "From" dimensions. In shapes that are more complex, both the Green (From) and Red (To) arrows will be shown.

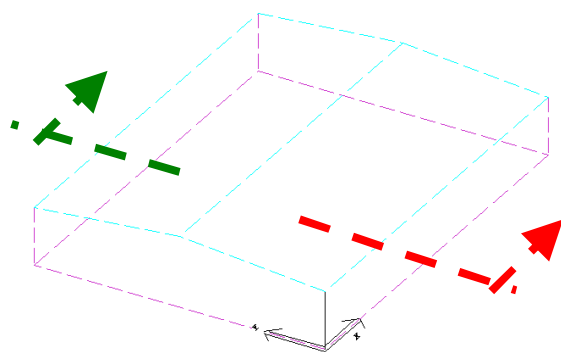


Cross Section from Floor Plan shown above

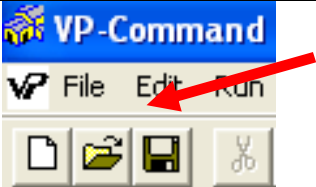
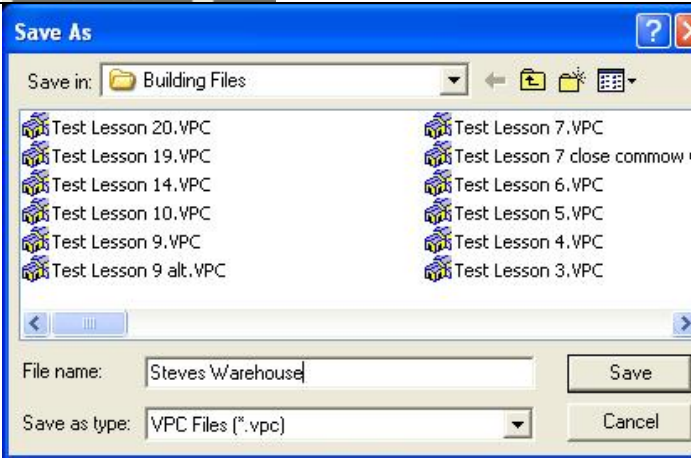
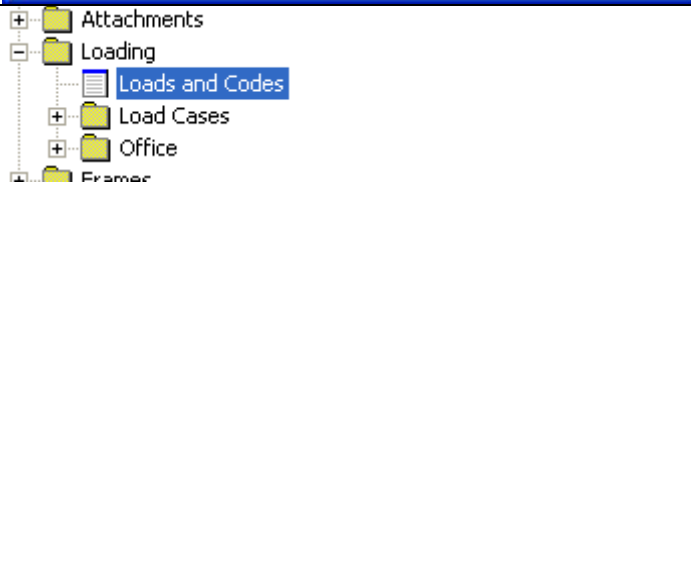
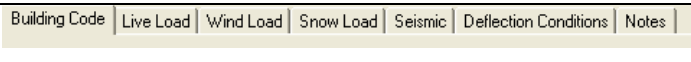
- Dimension A = 80
- Dimension B = 120
- From (Green) Eave Height = 14
- From (Green) Roof Pitch = 1
- Ridge Distance = 35 (measured from the Green / From arrow)
- To (Red) Eave Height = 14
- To (Red) Roof Pitch = ? (For this example blank out the to roof pitch.)

Note: You may leave one value blank and allow VPC to Calculate this unknown.

- Click on OK when complete.
- The Graphics Pane will display a three-dimensional view of your building envelope.



Reference of Section through Shape

	<p>6. Save your file:</p> <ul style="list-style-type: none"> Click on the Save icon from the toolbar.
	<ul style="list-style-type: none"> The Save As window will appear pointing to Save in the Building Files folder. In the File name field, type in a descriptive name that you wish to identify with this VPC file. I used Steve's Warehouse. Click on the Save button. <p>Note: The Building Files folder is where VPC will first look using VPC functions such as the Building Editor, Drawings, and VPC-Run.</p>
	<p>7. Load and Codes: Complete "Loading/Loads and Codes" information as required: This procedure will allow you to modify the Basic Loading (Building Code, Live Load, Wind Load, Snow Load, and Seismic) that is to be applied to your Shape(s). This procedure will have you modify loading for ALL shapes within your project. You can modify loading per shape or per surface on a shape by dropping down to that level in the tree. <i>Always Use data that applies to your local Building Code.</i> Having good default projects will save you time and ensure accuracy</p>
	<p>You will be complete each tab at this level as required.</p>



Lesson 3



Loading for Entire Building

Building Code | Live Load | Wind Load | Snow Load | Seismic | Deflection Conditions | Notes

Building Code: 2003 International Building Code

Building Use / Importance Category: Standard Occupancy Structure

Built Up: 89AISC Cold Form: 04AISI Rainfall: 10.0000

Building Code Alias (Optional):

Alias Code (Max. 6 Characters, NOT Optional if above is not blank):

Perform Second-Order Analysis

Use LRFD

OK Cancel Apply Help

Building Code: Select your appropriate code.

Note: Your local building official may specify that a unique "Building Code Alias" be entered so that drawings and reports include this information.

Loading for Entire Building

Building Code | Live Load | Wind Load | Snow Load | Seismic | Deflection Conditions | Notes

Live Load: 20.00 psf

Reducible

Collateral

Gravity Cases: 3 psf

Uplift Cases: 3 psf

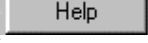
Adjust the load for Uplift Cases, as required, to represent all or a portion of the Gravity Case load that will be permanently and evenly distributed in the structure: e.g. ducts, sprinkler, and ceiling systems.

Apply Collateral along Slope of Rafters

Apply to Bottom Chord of WideBay

OK Cancel Apply Help

Live Load: Input required live load and any additional Collateral loads.

- Note: For this lesson, complete each tabbed folder within this window as required for your local Building Code. At the live load folder, add 3 psf collateral gravity for a sprinkler load. Note that if you click the cursor in any field and press the "F1" button on your keyboard, a "Pop-Up" help window will appear with a description of that field. Also, each window contains a "Help" button () which is "chock-full" of good stuff pertaining to that windows use! Take advantage of these!

Collateral

Gravity Cases: 0.0000 psf

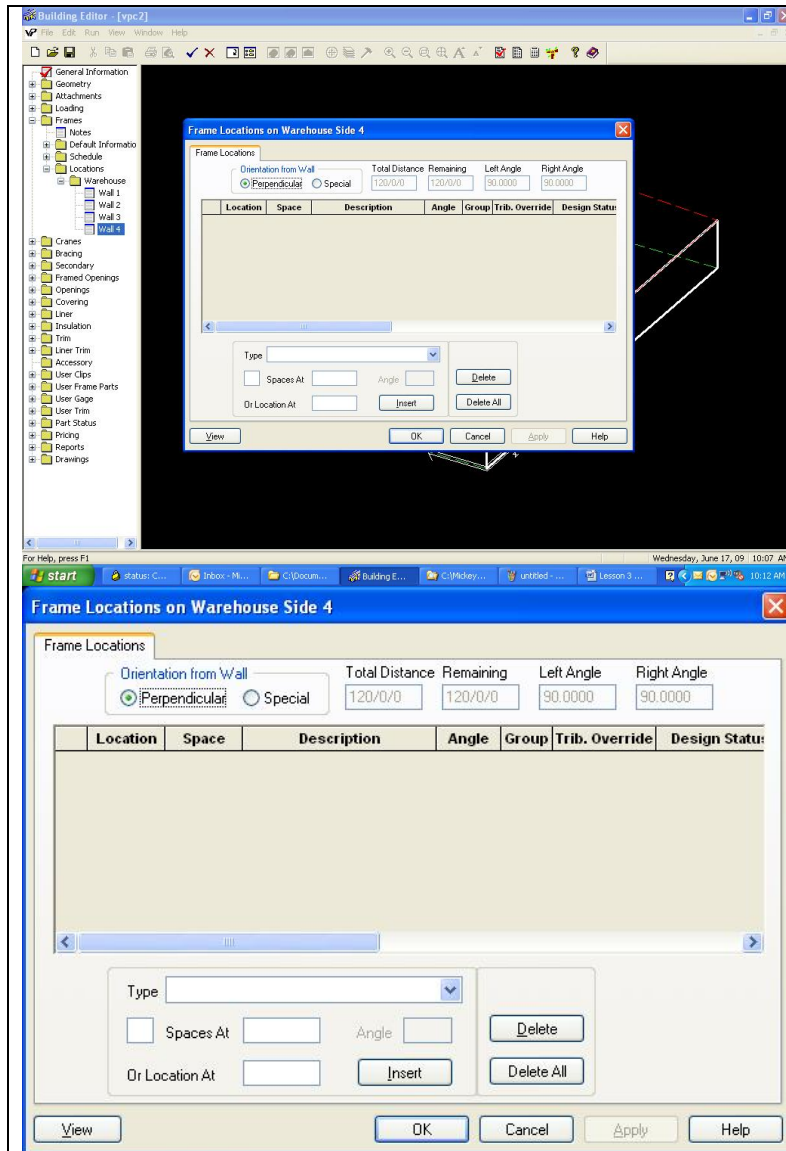
Uplift Cases: 0.00

Apply along Slope

Apply to Bottom Chord

Collateral | Gravity Cases

This edit box is used to apply additional collateral load for materials attached to the roof structure. collateral load is measured in Pounds per Square Foot (English) and is applied to the entire Building Shape.



8. Adding Frames:
You will be locating frames to define the bay spacing. It is good to begin developing good habits when working with VPCOMMAND to maintain consistency and speed up your input process. When locating frames, the Wall you select is known as the "Along Wall", and becomes an important point of reference in other VPCOMMAND functions.

Therefore, it is recommended that you select a front wall whenever possible to begin developing those good habits. The point from which you will be locating the frames from (the *start point* or *zero point*) will be from the *left-hand edge of the selected wall as you are standing outside your shape facing this wall*. Refer to the "How-To" on "Locating Frames" for this procedure and more information on adding frames. From the Tree, Open the "Frames" folder.

- From the Tree, Open the "Locations" folder.
- From the Tree, Open the folder for your Shape name.
- From the Shape folder, select the wall you wish to locate your frames along. In this exercise, select "Wall 4" which is the front sidewall for this shape. Note that it "Highlights" on the right hand graphics pane.
- Double-Click on the file for "Wall 4" from the Tree to access the "Frame Locations on ..." window.

Type **Post & Beam**

1 Spaces At **0/6** Angle

Or Location At

Frame Locations

Orientation from Wall: Perpendicular Special

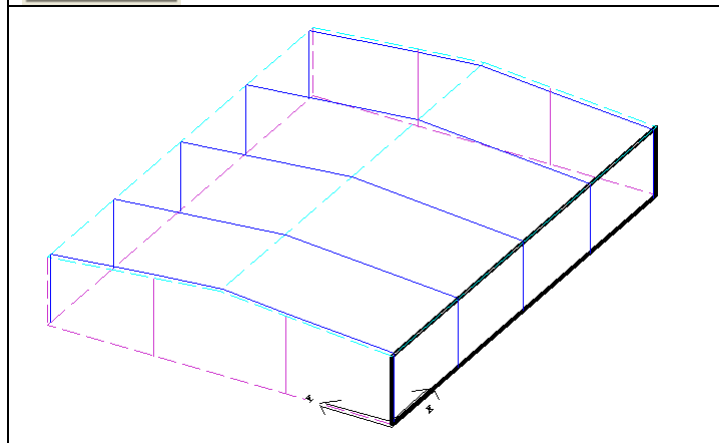
Total Distance Remaining: 120/0/0 Left Angle: 90.0000 Right Angle: 90.0000

Location	Space	Description	Angle	Group	Trib. Override	Design Status
1	0/6/0	Post & Beam	90.0000			Automatic Design

- At the Type field, select Post & Beam
 - Input 1 Spaces At 0/6 (for an Inset endwall condition)
 - Click on the Insert button
- Note: The frame(s) will appear in the frame list. The "Spaces At" option will locate the centerline of frame from the last centerline of frame while the "Location At" will locate the centerline of frame from the left hand side (zero dimensions) of the selected (along) wall.

	Space	Description	Angle
1	0/6/0	Post & Beam	90.0000
2	29/6/0	Rigid Frame	90.0000
3	30/0/0	Rigid Frame	90.0000
4	30/0/0	Rigid Frame	90.0000
5	29/6/0	Rigid Frame with Endposts	90.0000

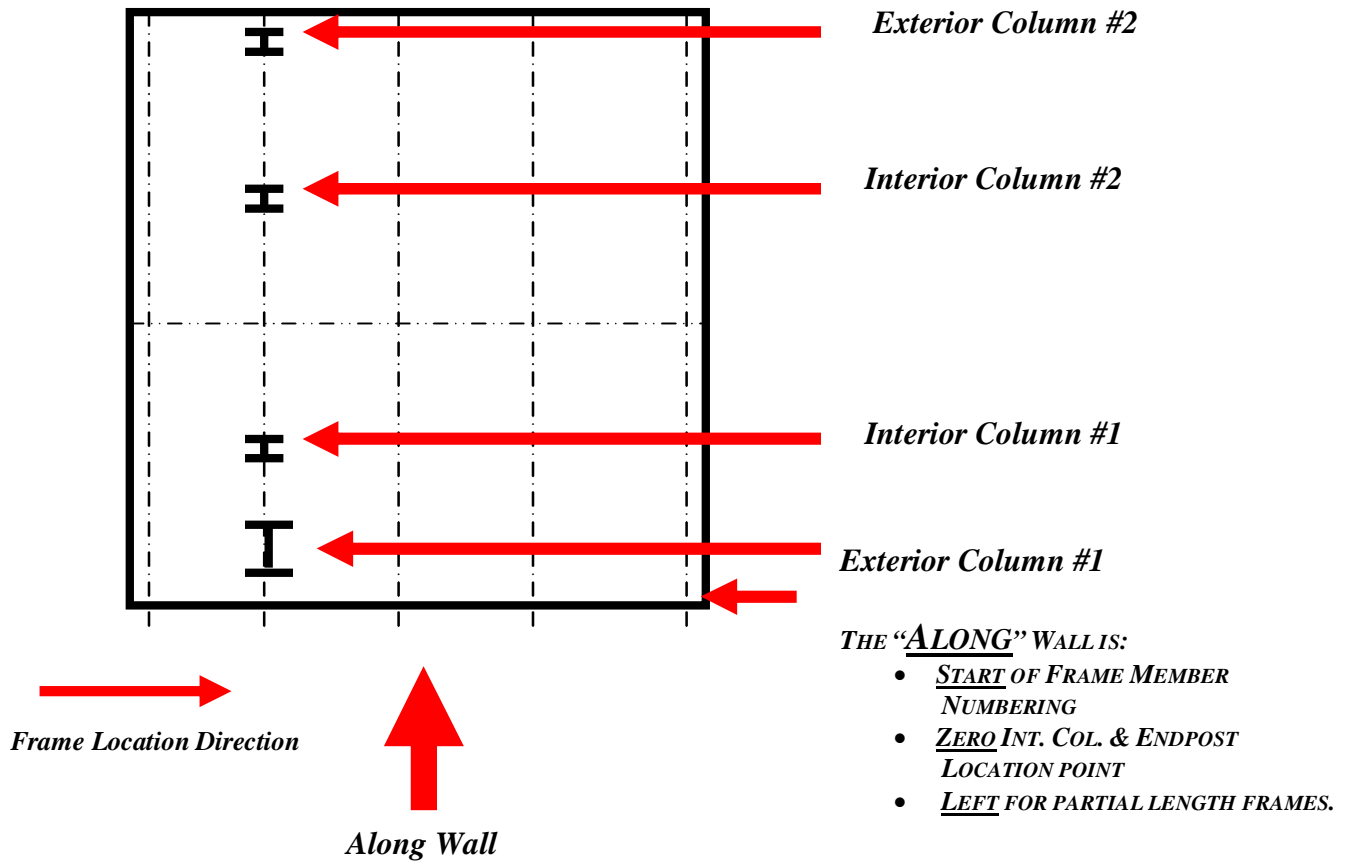
- insert a Rigid Frame at 1 spaces at 29/6
- insert a Rigid Frame at 2 spaces at 30
- insert a Rigid Frame with Endposts at 1 spaces at 29/6
- Click on OK when all frames have been located and you have 0/6/0 in the Remaining field.



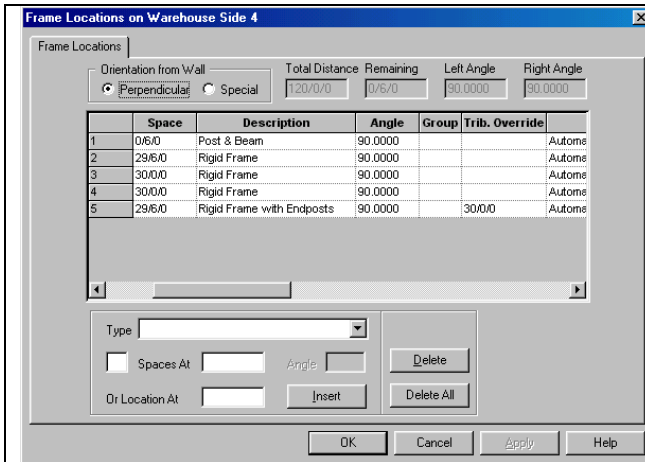
The graphics pane will display your frames as yellow stick segments.

Note: After the VPC-Run is completed you will investigate the various colors of the building members. This will lead you to find what has been designed and priced correctly and what has been unable to design and price.

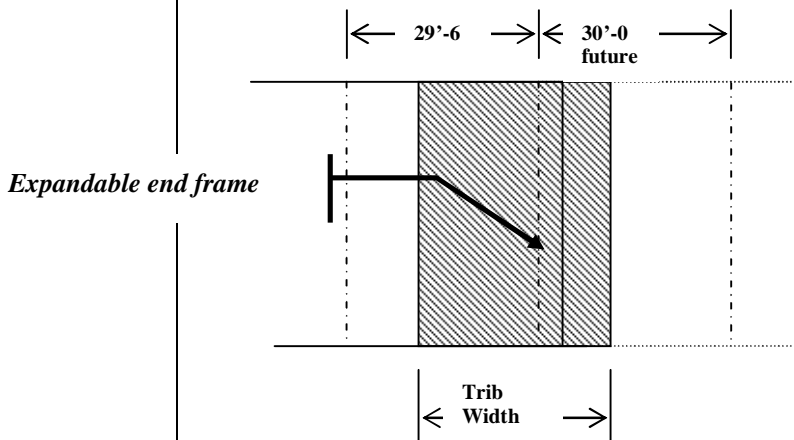
More on Frames:



The wall you select to locate your frames "Along" is very important. It becomes the "Reference Point (zero location)" for locating Interior Columns and Endposts. You locate frames from left to right as you are standing outside your shape facing the selected Along wall. It is also the "Start Point" for frame member numbering as well as the "Left" side for Partial Length frames (which will be discussed in lesson 6).



To make the frame an expandable end frame, simply click in the "Trib. Override" field next to the frame and enter the new Tributary Width (30 feet for this example). Typically the future bay width, but calculated as shown below. Click "OK" to save your input



$Tributary\ Width = [(1/2\ centerline\ to\ centerline\ of\ end\ frame\ and\ adjacent\ interior\ frame) + (1/2\ centerline\ to\ centerline\ end\ frame\ and\ future\ frame)]\ Divided\ by\ 2.$

$Trib\ Width = [1/2 (29.5\ ft) + 1/2 (30\ ft)]\ divided\ by\ 2$

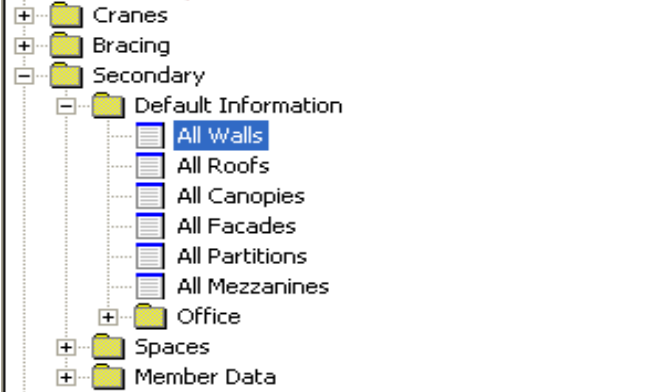
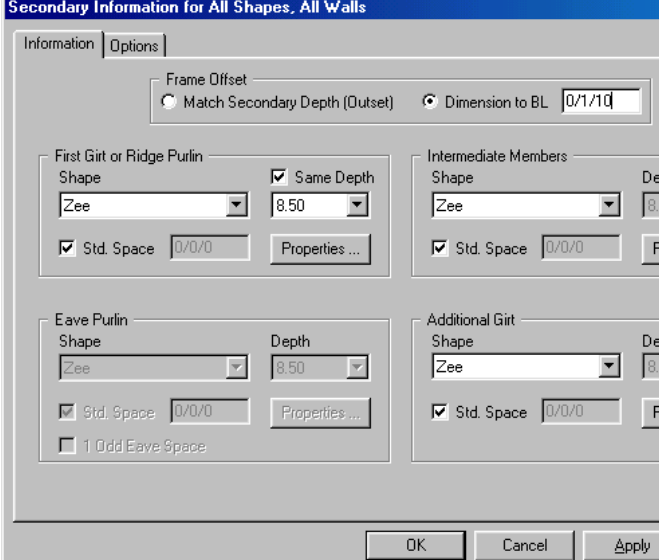
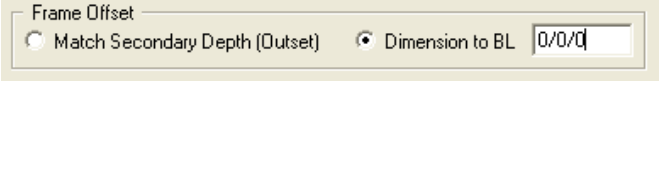
$Trib\ Width = 29.75\ ft$

In the above example we used 30 ft in the "Trib. Override" field.

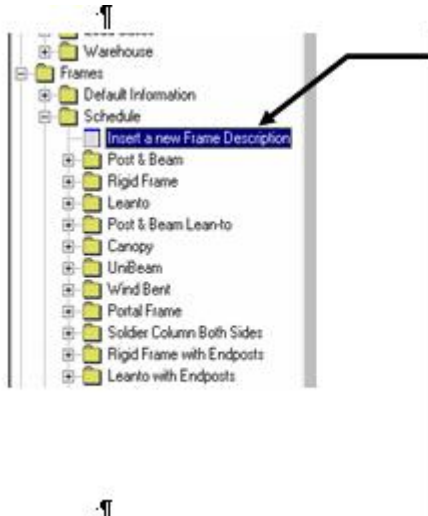
9. Modify Wall

Secondary, For Inset Girt Condition, All Shapes:

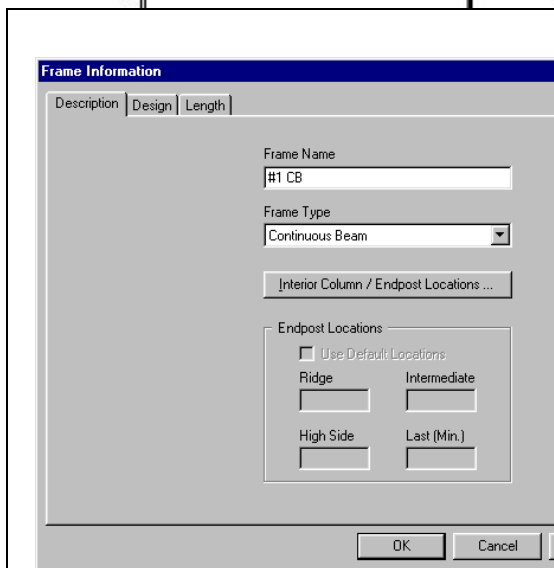
In this process you will be modifying secondary for "All Walls" to create the inset girt condition. The information input at this level will apply to *all shapes* (any additional shapes that are added) for your project. In order to modify, for example, one wall (or roof) surface, simply drop down to that folder level in the Tree. *Remember* that when you added your frames, you placed the end frames six inches off of the building line to accommodate the standard inset condition.

	<ul style="list-style-type: none"> • Open the "Secondary" folder. • Open the "Default Information" folder. <p>Double-click the "All Walls" file to access the "Default Secondary Information for All Wall, All Shapes" window</p>
	<ul style="list-style-type: none"> • At the "Information" tab, under the "Frame Offset" field, Select the "Dimension to BL" radio button and type in 0/1/10 (1 5/8", remember input is feet/inches/sixteenths). • Click "OK" to save your input.
	<p>Clicking the mouse in the field you wish to know more about and hitting the "F1" key on the keyboard will obtain this "Help" screen, as well as Help on any VPCCommand field</p>
<p>0. Modifying Frame Types: You will be selecting <i>Option 1</i> or <i>Option 2</i> as shown below. When you added frames to this shape you were instructed to select the left Endframe as a Post and Beam and the Interior Frames as Rigid Frames. We will now instruct you how to change certain frame types if needed. For this exercise, you will change Frame Line 3 to a Continuous Beam with one interior column (CB-1). <i>Note that if you had had a CB-1 in the schedule (perhaps from a default project) you would've simply selected this as the frame type at frame line 3 as shown in Option 2.</i> A frame type <i>MUST</i> exist in the schedule in order to be available for insertion into your shape. Therefore, we will add a CB-1 frame type to the schedule, and then revise FL#3 to the CB-1. This project requires an interior column located at 45'-0 from the front sidewall. You have also created some Default CB frame types. This procedure will familiarize you with the process of adding other frame types.</p>	

Option 1: Adding a frame to schedule

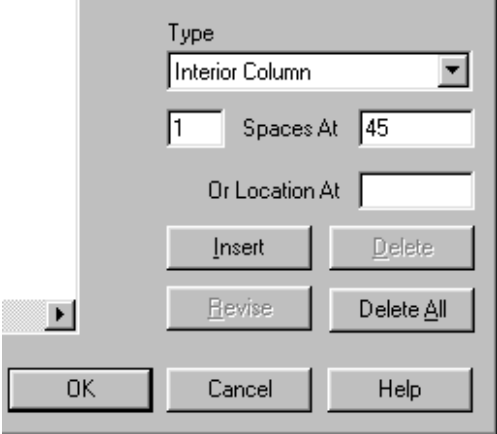
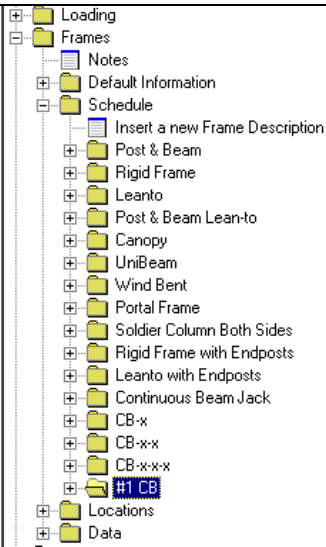


- → From the Tree, Open the “**Frames**” folder.
- → From the Tree, Open the “**Schedule**” folder.
- → Double-click the “**Insert a new Frame Description**” file to access the “**Frame Information**” screen.

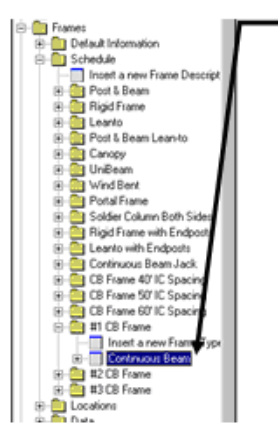


- At the “*Frame Information*” window, type in your #1 CB in the “*Frame Name*” field. Note that you can enter any name you wish, such as *CB-1, 45-35 IC Spacing*, but it is best to name it something you can relate to.
- Click on the “*Frame Type*” pull down list and choose “*Continuous Beam*”.
- Click on the “*Interior Column / Endpost Locations...*” button to access the “*Location*” window.

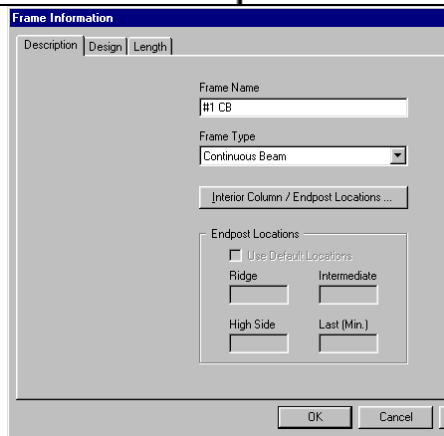
Lesson 3

	<ul style="list-style-type: none"> • At the "Location" window, Select "Interior Column" from the "Type" pull down list. • Type in 1 Spaces At 45. • Click on "Insert" to place the information in the list. • Note: The "Spaces At" is from the previous input dimension and the "Or Location At" is located from the "Along" wall. The "Along" wall is defined as the "Wall along which you located the frame". In this exercise, the original default interior frame was located along Wall 4 (front wall). The Ridge is offset 45'-0 from Wall 4 and this is the point we wish to locate the interior column. • Click "OK". • Click "OK".
	<ul style="list-style-type: none"> • Hit the "Refresh" button on the toolbar or the "F5" key to refresh and rebuild the Tree. • The #1 CB or the name you gave frame has been added to the Frames Schedule and now appears in the tree. Remember, you may already have this frame type built into your defaults.

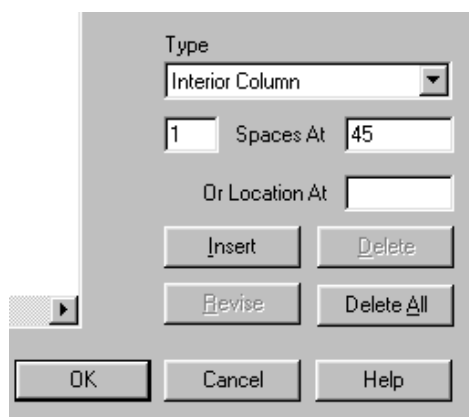
Option 2: Modifying frame already in schedule



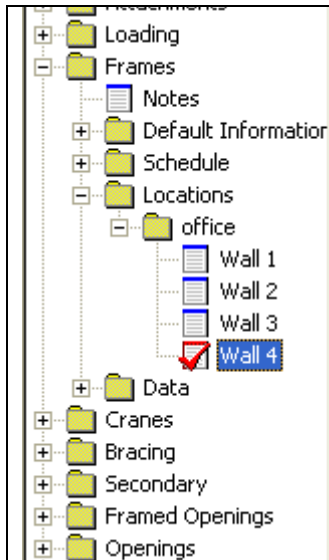
- → From the Tree, Open the “**Frames**” folder.¶
- → From the Tree, Open the “**Schedule**” folder.¶
- → Open the Folder for your **Default CB frame**.¶
- → Double-click the “**Frame Description (Continuous Beam)**” file to access the “**Frame Information**” screen.¶



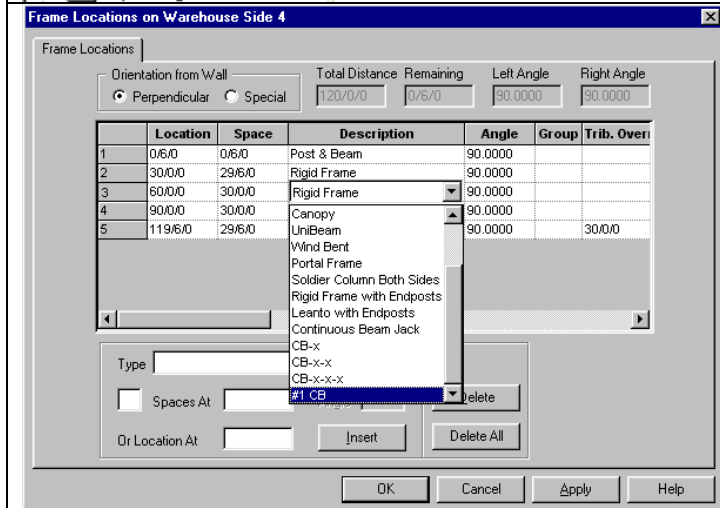
- Click on the “*Interior Column / Endpost Locations...*” button to access the “*Location*” window.



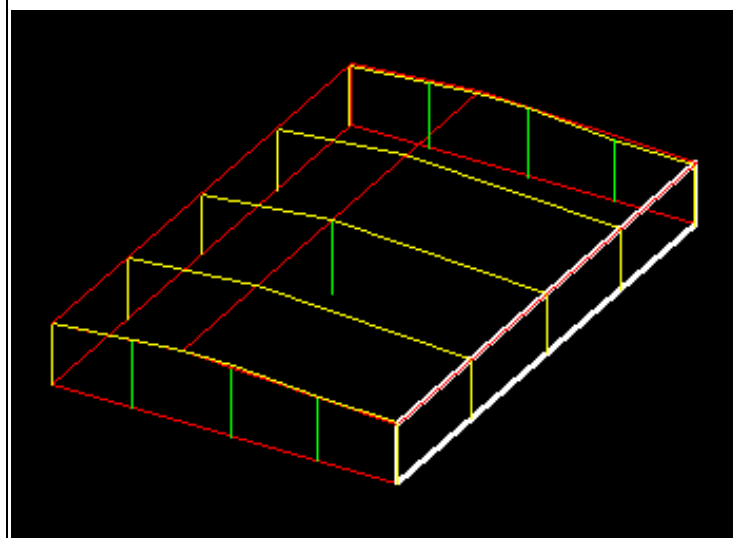
- At the “*Location*” window, Select “*Interior Column*” from the “*Type*” pull down list.
- Type in 1 Spaces At 45.
- Click on “*Insert*” to place the information in the list.
- Note: The “*Spaces At*” is from the previous input dimension and the “*Or Location At*” is located from the “*Along*” wall. The “*Along*” wall is defined as the “*Wall along which you located the frame*”. In this exercise, the original default interior frame was located along Wall 4 (front wall). The Ridge is offset 45'-0 from Wall 4 and this is the point we wish to locate the interior column.
- Click “*OK*”.
- Click “*OK*”.




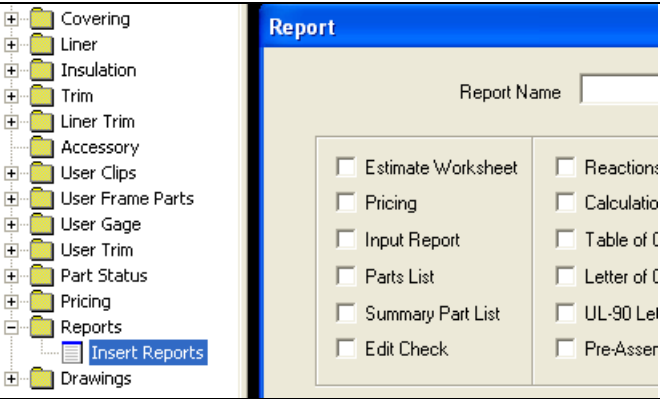
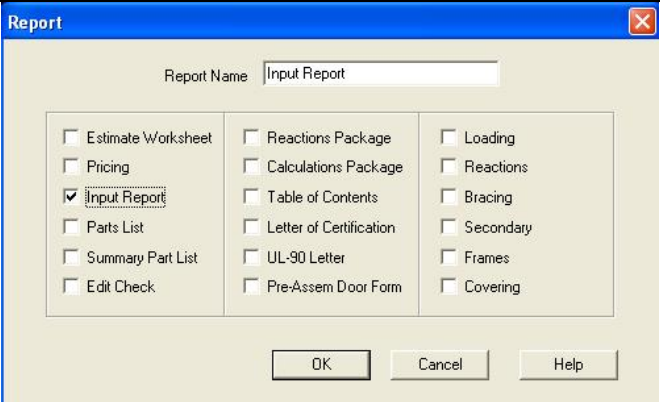
- From the Tree Open the *Frames/Locations* folder.
- Open the folder for your *shape*.
- Double-click *Wall 4* (note the check mark which indicates that this is the wall along which the frames were located), to access the "*Frame Locations...*" window.

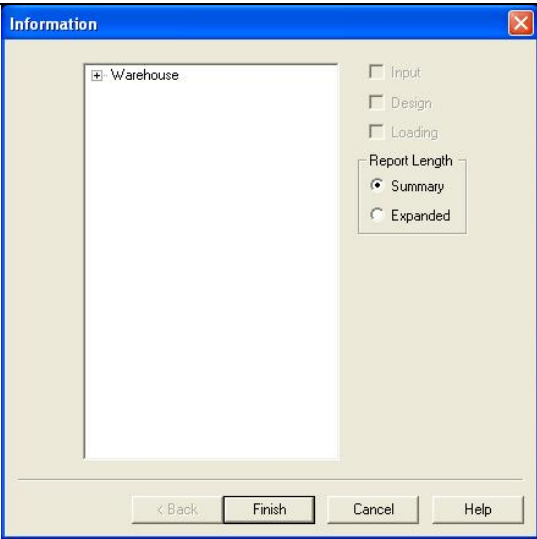
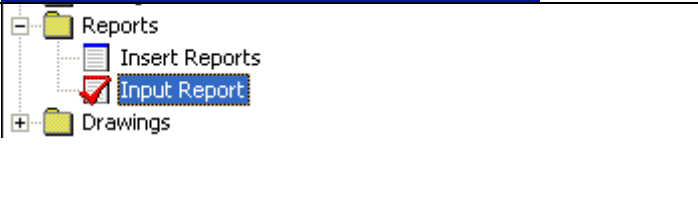
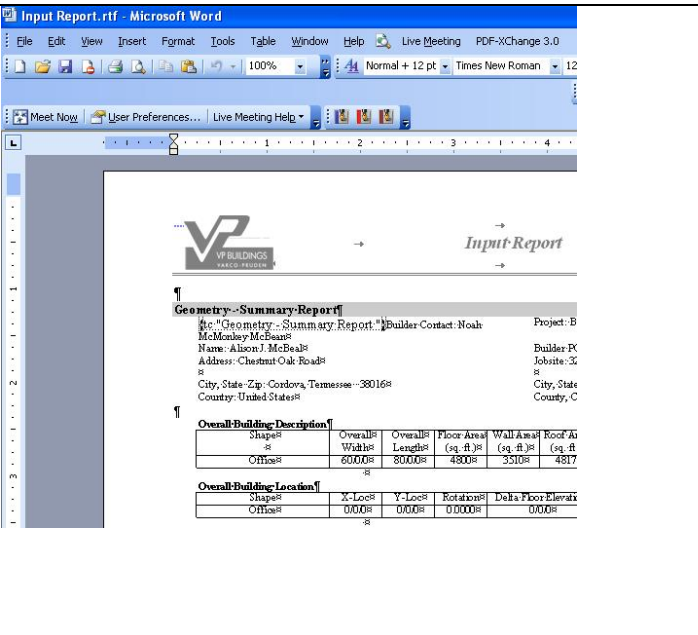
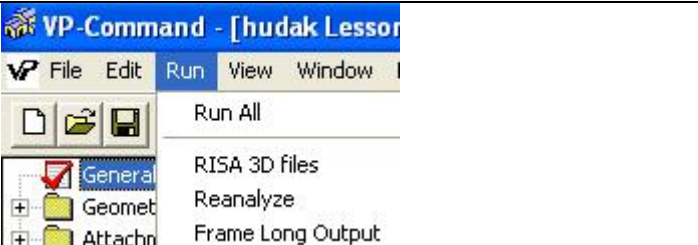


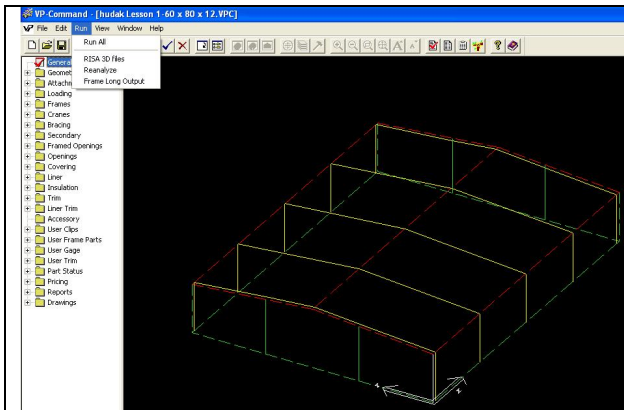
- At the "*Frame Locations...*" window, click in the list field for frame line 3 description. A pull down list will appear which will allow you to select *#1 CB* or your frame name (the frame you added to the schedule).
- Click on "*OK*" to save your changes.



- The Interior Column will now appear in the right hand graphics pane.

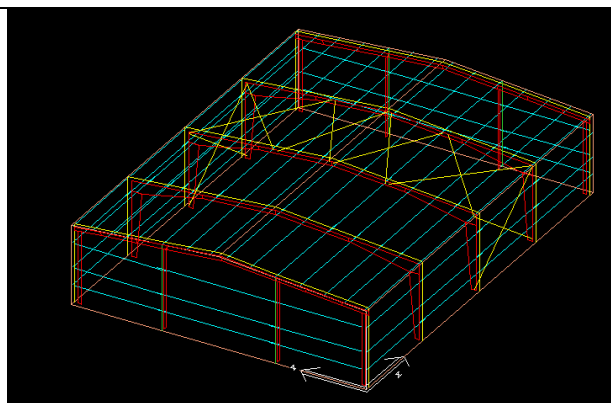
	<p>11. Save your VPCommand file.</p> <ul style="list-style-type: none"> Click on the Save icon. The file will immediately save. <p>Note: Remember that the first time you saved your file you saved it to the Building Files folder and were required to name it. Every save after this adds the latest information to the VPC file.</p>
	<p>12. Run and Review your Input Report.</p> <ul style="list-style-type: none"> Click on the plus (+) sign to the left of the Reports folder to open it. Double-click the Insert Reports file to open the Report window.
	<ul style="list-style-type: none"> Select Input Report from the list. The first report you click on from the list will become the header on the report generated. You may type in any name you desire in the Report Name field. Click on OK.

	<ul style="list-style-type: none"> Click on Finish at the Information window. 																														
	<ul style="list-style-type: none"> Open the Reports folder again. Double-click the Input Report (or whatever you have named it) to open the report in Microsoft Word. 																														
 <table border="1" data-bbox="430 1417 812 1480"> <thead> <tr> <th colspan="5">Overall-Building-Description</th> </tr> <tr> <th>Shape</th> <th>Overall Width</th> <th>Overall Length</th> <th>Floor Area (sq. ft)</th> <th>Wall Area (sq. ft)</th> </tr> </thead> <tbody> <tr> <td>Office</td> <td>6000</td> <td>8000</td> <td>4800</td> <td>3510</td> </tr> </tbody> </table> <table border="1" data-bbox="430 1480 812 1533"> <thead> <tr> <th colspan="5">Overall-Building-Location</th> </tr> <tr> <th>Shape</th> <th>X-Coord</th> <th>Y-Coord</th> <th>Rotations</th> <th>Delta Floor Elevations</th> </tr> </thead> <tbody> <tr> <td>Office</td> <td>0000</td> <td>0000</td> <td>00000</td> <td>000</td> </tr> </tbody> </table>	Overall-Building-Description					Shape	Overall Width	Overall Length	Floor Area (sq. ft)	Wall Area (sq. ft)	Office	6000	8000	4800	3510	Overall-Building-Location					Shape	X-Coord	Y-Coord	Rotations	Delta Floor Elevations	Office	0000	0000	00000	000	<ul style="list-style-type: none"> Review the Input Report. Exit MSWord when review is complete. <p>Note: What you have input into VPCCommand and is reflected on this report is what the VPC-Run function will attempt to design, detail, and price. This report is not tied back in with VPC. Any changes you make on this MSWord document will not be placed back into the VPC Building Editor. If you make any changes to this report (such as add pictures, etc.) you should save it as a ".doc" MSWord file type.</p>
Overall-Building-Description																															
Shape	Overall Width	Overall Length	Floor Area (sq. ft)	Wall Area (sq. ft)																											
Office	6000	8000	4800	3510																											
Overall-Building-Location																															
Shape	X-Coord	Y-Coord	Rotations	Delta Floor Elevations																											
Office	0000	0000	00000	000																											
	<p>13. VPC-Run – Designing and Detailing your VPC file.</p> <ul style="list-style-type: none"> Click on Run 																														

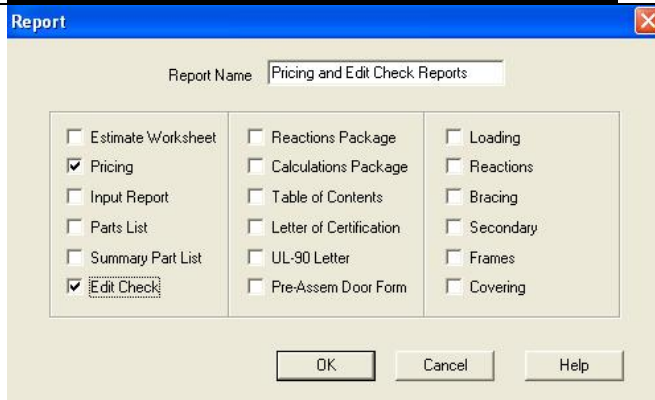


- Click on the Run All from the menu.

Note: At this point VPC will attempt to design, detail, and price your building based upon your input. At the lower left portion of this screen you will see the functions that are being executed and you will also see your building file take shape. The colors and segments will change as each function is completed.



- Your cursor will be shape of hour glass during run time.
- When the VPC Run is complete you will see the building's segment colors have changed


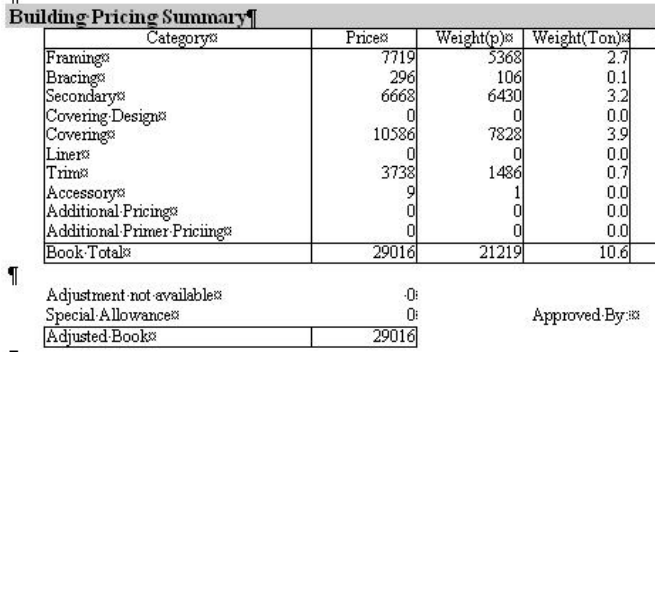
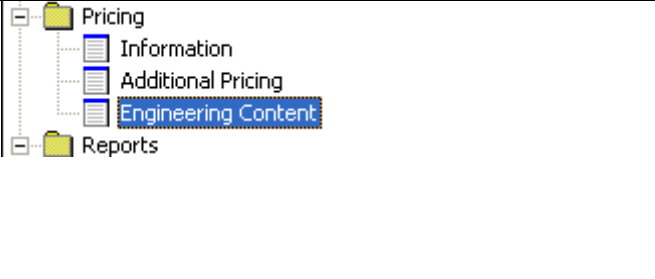
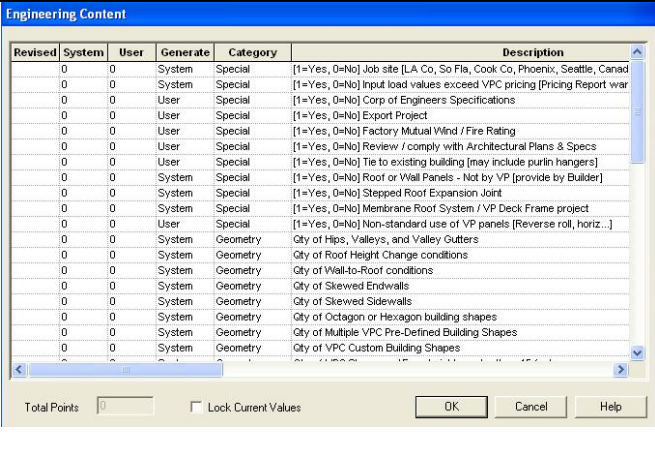


14. Obtaining more Reports - Pricing and Edit Check:

- Still within the Building Editor, open the Reports folder as you did in step 10.
- Double-click the Reports file to open the Report window.
- Click on the Pricing and Edit Check fields. Note that it is recommended you change the name in the Report Name field to reflect what reports you have requested.
- Click on OK.



- Open the Reports folder.
- Double-click the name of the desired report to activate MSWord once again.
- A Warning message will

	<p>appear to review the Engineering Content list every time you request a Pricing report. You will do this after reviewing the Reports.</p> <ul style="list-style-type: none"> Click on OK on this message to allow MSWord to continue to open. 																																																																																																																
 <table border="1"> <thead> <tr> <th>Category</th> <th>Price</th> <th>Weight(p)</th> <th>Weight(Ton)</th> </tr> </thead> <tbody> <tr><td>Framing</td><td>7719</td><td>5368</td><td>2.7</td></tr> <tr><td>Bracing</td><td>296</td><td>106</td><td>0.1</td></tr> <tr><td>Secondary</td><td>6668</td><td>6430</td><td>3.2</td></tr> <tr><td>Covering Design</td><td>0</td><td>0</td><td>0.0</td></tr> <tr><td>Covering</td><td>10586</td><td>7828</td><td>3.9</td></tr> <tr><td>Linex</td><td>0</td><td>0</td><td>0.0</td></tr> <tr><td>Trim</td><td>3738</td><td>1486</td><td>0.7</td></tr> <tr><td>Accessory</td><td>9</td><td>1</td><td>0.0</td></tr> <tr><td>Additional Pricing</td><td>0</td><td>0</td><td>0.0</td></tr> <tr><td>Additional Primer Pricing</td><td>0</td><td>0</td><td>0.0</td></tr> <tr><td>Book Total</td><td>29016</td><td>21219</td><td>10.6</td></tr> </tbody> </table> <p>Adjustment not available: 0 Special Allowance: 0 Adjusted Book: 29016</p> <p>Approved By:</p>	Category	Price	Weight(p)	Weight(Ton)	Framing	7719	5368	2.7	Bracing	296	106	0.1	Secondary	6668	6430	3.2	Covering Design	0	0	0.0	Covering	10586	7828	3.9	Linex	0	0	0.0	Trim	3738	1486	0.7	Accessory	9	1	0.0	Additional Pricing	0	0	0.0	Additional Primer Pricing	0	0	0.0	Book Total	29016	21219	10.6	<p>Reviewing the Pricing and Edit Check Reports:</p> <ul style="list-style-type: none"> In addition to reviewing the VPC colors, you will review the Pricing and Edit Check reports thoroughly to look for potential problems before finalizing your price. At the Building Pricing Summary section you should look for asterisks (*) in any category. This will indicate a potential problem that you must correct before pricing is complete. 																																																																
Category	Price	Weight(p)	Weight(Ton)																																																																																																														
Framing	7719	5368	2.7																																																																																																														
Bracing	296	106	0.1																																																																																																														
Secondary	6668	6430	3.2																																																																																																														
Covering Design	0	0	0.0																																																																																																														
Covering	10586	7828	3.9																																																																																																														
Linex	0	0	0.0																																																																																																														
Trim	3738	1486	0.7																																																																																																														
Accessory	9	1	0.0																																																																																																														
Additional Pricing	0	0	0.0																																																																																																														
Additional Primer Pricing	0	0	0.0																																																																																																														
Book Total	29016	21219	10.6																																																																																																														
	<p>15. Reviewing Engineering Content Screen:</p> <ul style="list-style-type: none"> Open the Pricing folder. Double-click the Engineering Content file to open the Engineering Content window. 																																																																																																																
 <table border="1"> <thead> <tr> <th>Revised</th> <th>System</th> <th>User</th> <th>Generate</th> <th>Category</th> <th>Description</th> </tr> </thead> <tbody> <tr><td>0</td><td>0</td><td>System</td><td>Special</td><td>[1=Yes, 0=No]</td><td>Job site [LA Co, So Fla, Cook Co, Phoenix, Seattle, Canad</td></tr> <tr><td>0</td><td>0</td><td>System</td><td>Special</td><td>[1=Yes, 0=No]</td><td>Input load values exceed VPC pricing [Pricing Report war</td></tr> <tr><td>0</td><td>0</td><td>User</td><td>Special</td><td>[1=Yes, 0=No]</td><td>Corp of Engineers Specifications</td></tr> <tr><td>0</td><td>0</td><td>User</td><td>Special</td><td>[1=Yes, 0=No]</td><td>Export Project</td></tr> <tr><td>0</td><td>0</td><td>User</td><td>Special</td><td>[1=Yes, 0=No]</td><td>Factory Mutual Wind / Fire Rating</td></tr> <tr><td>0</td><td>0</td><td>User</td><td>Special</td><td>[1=Yes, 0=No]</td><td>Review / comply with Architectural Plans & Specs</td></tr> <tr><td>0</td><td>0</td><td>User</td><td>Special</td><td>[1=Yes, 0=No]</td><td>Tie to existing building [may include purlin hangers]</td></tr> <tr><td>0</td><td>0</td><td>System</td><td>Special</td><td>[1=Yes, 0=No]</td><td>Roof or Wall Panels - Not by VP [provide by Builder]</td></tr> <tr><td>0</td><td>0</td><td>System</td><td>Special</td><td>[1=Yes, 0=No]</td><td>Stepped Roof Expansion Joint</td></tr> <tr><td>0</td><td>0</td><td>System</td><td>Special</td><td>[1=Yes, 0=No]</td><td>Membrane Roof System / VP Deck Frame project</td></tr> <tr><td>0</td><td>0</td><td>User</td><td>Special</td><td>[1=Yes, 0=No]</td><td>Non-standard use of VP panels [Reverse roll, horiz...]</td></tr> <tr><td>0</td><td>0</td><td>System</td><td>Geometry</td><td>Qty of Hips, Valleys, and Valley Gutters</td></tr> <tr><td>0</td><td>0</td><td>System</td><td>Geometry</td><td>Qty of Roof Height Change conditions</td></tr> <tr><td>0</td><td>0</td><td>System</td><td>Geometry</td><td>Qty of Wall-to-Roof conditions</td></tr> <tr><td>0</td><td>0</td><td>System</td><td>Geometry</td><td>Qty of Skewed Endwalls</td></tr> <tr><td>0</td><td>0</td><td>System</td><td>Geometry</td><td>Qty of Skewed Sidewalls</td></tr> <tr><td>0</td><td>0</td><td>System</td><td>Geometry</td><td>Qty of Octagon or Hexagon building shapes</td></tr> <tr><td>0</td><td>0</td><td>System</td><td>Geometry</td><td>Qty of Multiple VPC Pre-Defined Building Shapes</td></tr> <tr><td>0</td><td>0</td><td>System</td><td>Geometry</td><td>Qty of VPC Custom Building Shapes</td></tr> </tbody> </table>	Revised	System	User	Generate	Category	Description	0	0	System	Special	[1=Yes, 0=No]	Job site [LA Co, So Fla, Cook Co, Phoenix, Seattle, Canad	0	0	System	Special	[1=Yes, 0=No]	Input load values exceed VPC pricing [Pricing Report war	0	0	User	Special	[1=Yes, 0=No]	Corp of Engineers Specifications	0	0	User	Special	[1=Yes, 0=No]	Export Project	0	0	User	Special	[1=Yes, 0=No]	Factory Mutual Wind / Fire Rating	0	0	User	Special	[1=Yes, 0=No]	Review / comply with Architectural Plans & Specs	0	0	User	Special	[1=Yes, 0=No]	Tie to existing building [may include purlin hangers]	0	0	System	Special	[1=Yes, 0=No]	Roof or Wall Panels - Not by VP [provide by Builder]	0	0	System	Special	[1=Yes, 0=No]	Stepped Roof Expansion Joint	0	0	System	Special	[1=Yes, 0=No]	Membrane Roof System / VP Deck Frame project	0	0	User	Special	[1=Yes, 0=No]	Non-standard use of VP panels [Reverse roll, horiz...]	0	0	System	Geometry	Qty of Hips, Valleys, and Valley Gutters	0	0	System	Geometry	Qty of Roof Height Change conditions	0	0	System	Geometry	Qty of Wall-to-Roof conditions	0	0	System	Geometry	Qty of Skewed Endwalls	0	0	System	Geometry	Qty of Skewed Sidewalls	0	0	System	Geometry	Qty of Octagon or Hexagon building shapes	0	0	System	Geometry	Qty of Multiple VPC Pre-Defined Building Shapes	0	0	System	Geometry	Qty of VPC Custom Building Shapes	<p>Description of the Engineering Content Screen:</p> <p><u>Revised</u>: Show the status of the condition. If the condition was added by the system (VPC), it will show No, in that the status of that item was set but has not been changed by the user. If the user has modified a system generated or user input item the status will show Yes.</p> <p><u>System</u>: Shows the quantity of</p>
Revised	System	User	Generate	Category	Description																																																																																																												
0	0	System	Special	[1=Yes, 0=No]	Job site [LA Co, So Fla, Cook Co, Phoenix, Seattle, Canad																																																																																																												
0	0	System	Special	[1=Yes, 0=No]	Input load values exceed VPC pricing [Pricing Report war																																																																																																												
0	0	User	Special	[1=Yes, 0=No]	Corp of Engineers Specifications																																																																																																												
0	0	User	Special	[1=Yes, 0=No]	Export Project																																																																																																												
0	0	User	Special	[1=Yes, 0=No]	Factory Mutual Wind / Fire Rating																																																																																																												
0	0	User	Special	[1=Yes, 0=No]	Review / comply with Architectural Plans & Specs																																																																																																												
0	0	User	Special	[1=Yes, 0=No]	Tie to existing building [may include purlin hangers]																																																																																																												
0	0	System	Special	[1=Yes, 0=No]	Roof or Wall Panels - Not by VP [provide by Builder]																																																																																																												
0	0	System	Special	[1=Yes, 0=No]	Stepped Roof Expansion Joint																																																																																																												
0	0	System	Special	[1=Yes, 0=No]	Membrane Roof System / VP Deck Frame project																																																																																																												
0	0	User	Special	[1=Yes, 0=No]	Non-standard use of VP panels [Reverse roll, horiz...]																																																																																																												
0	0	System	Geometry	Qty of Hips, Valleys, and Valley Gutters																																																																																																													
0	0	System	Geometry	Qty of Roof Height Change conditions																																																																																																													
0	0	System	Geometry	Qty of Wall-to-Roof conditions																																																																																																													
0	0	System	Geometry	Qty of Skewed Endwalls																																																																																																													
0	0	System	Geometry	Qty of Skewed Sidewalls																																																																																																													
0	0	System	Geometry	Qty of Octagon or Hexagon building shapes																																																																																																													
0	0	System	Geometry	Qty of Multiple VPC Pre-Defined Building Shapes																																																																																																													
0	0	System	Geometry	Qty of VPC Custom Building Shapes																																																																																																													



Lesson 3

Revised	System	User	Generate	Category
Description				
<p>system detected conditions.</p> <p><u>User</u>: Shows the quantity of user input conditions.</p> <p><u>Generate</u>: Shows the type of condition, either System or User. A system condition should be detected by VPC automatically. A user condition must be entered by the user.</p> <p><u>Category</u>: Shows the category of input the condition is in.</p> <p><u>Description</u>: Shows a brief description of the condition.</p> <p>Click OK after review and revision is complete to close the Engineering Content window.</p>				